



1: Naphterpin

2: Naphterpin B



3: Naphterpin C



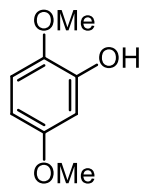
8: Marinone (X = H, Y = Br)

9: Isomarinone (X = Br, Y = H)

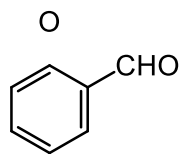
- Naphterpin and Marinone are families of marine merotepenoids
- Naphterpin was the first natural product discovered in this family, isolated by Seto et al. in 1990
- Marinone was isolated by Fenical and coworkers in 1992 and isomarinone reported in 2000

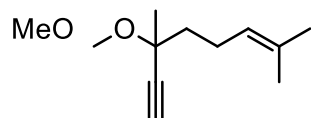
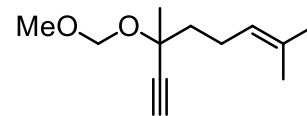
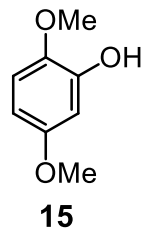
# Retrosynthetic Analysis of the Naphterpins

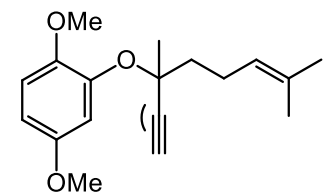
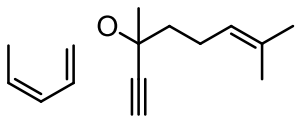


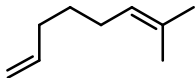


**15**



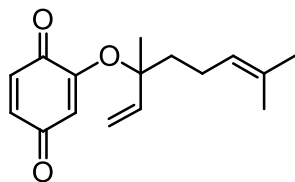






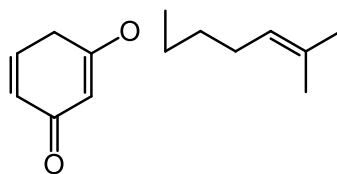
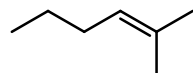
OT

---

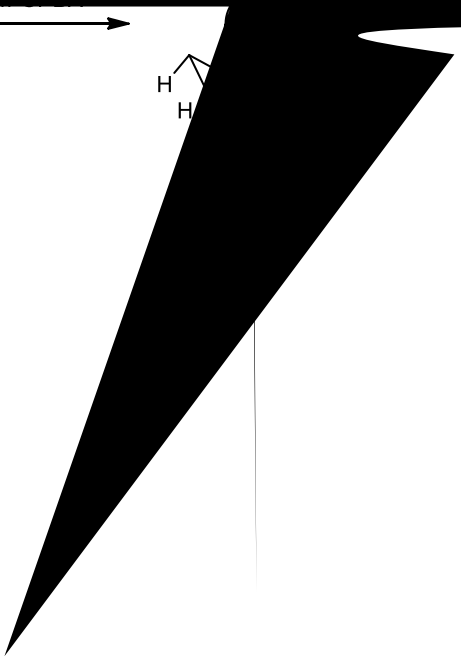


**1**

---







---

7: debromomarinone

(±)-9: Isomarin