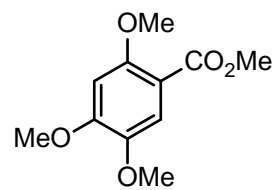


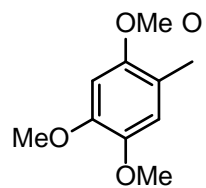
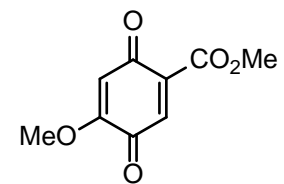
Qi, C.; Wang, W.; Reichl, K.D.; McNeely, J.; Porco, J.A.,



aq. CAN (2 equiv.)
Silica gel

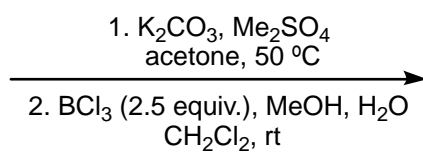
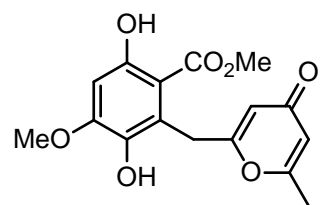
CH_2Cl_2 , 0 °C to rt

81%

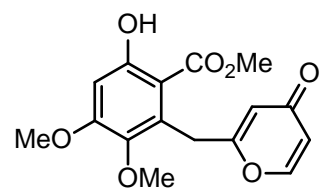


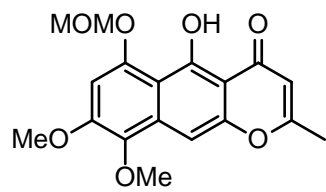
||
o





64% (2 steps)





Cs_2CO_3 , Me_2SO
acetone, 50 °C

86%

