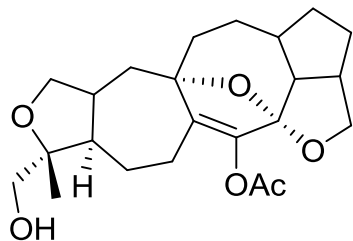


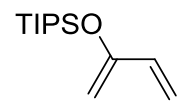


# Retro-synthetic Route

---



A very similar product, see: Yang, Z. *Nat. Commun.* 2017, 8, 14233.

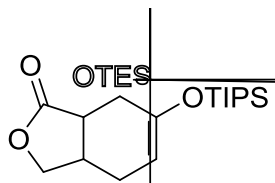


14

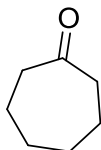
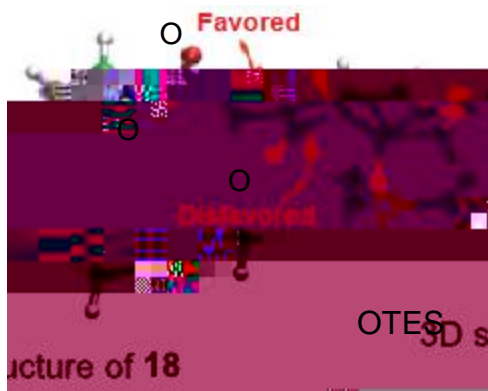
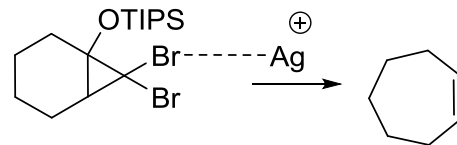
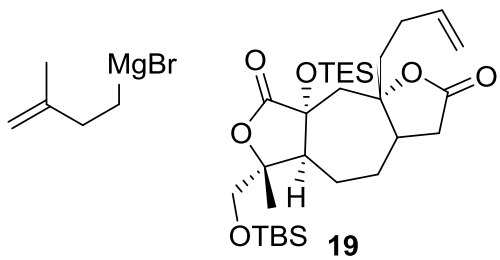
---

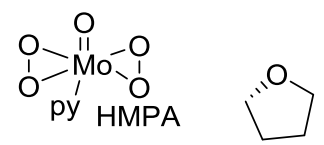
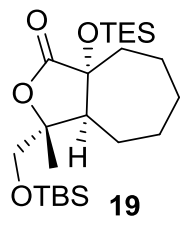
N



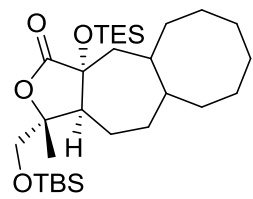


16

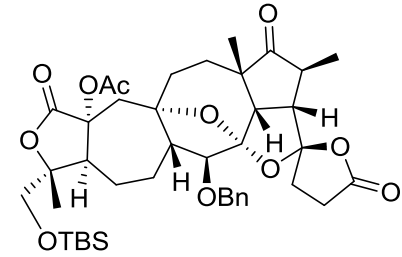




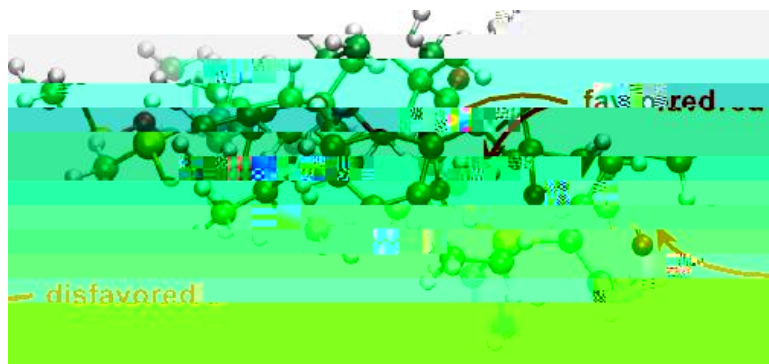




22



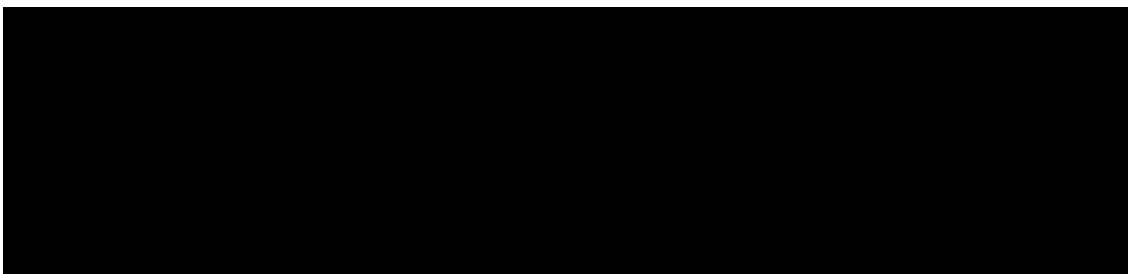
24  
56%



CO<sub>2</sub>

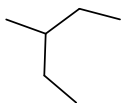


O









1)  $\text{Ac}_2\text{O}, \text{Et}_3\text{N}$   
DMAP  
2)

$\text{Pd/C}, \text{H}_2$

|

