

# **Boston College**

**FACT 1989**

**BOOK 1989**

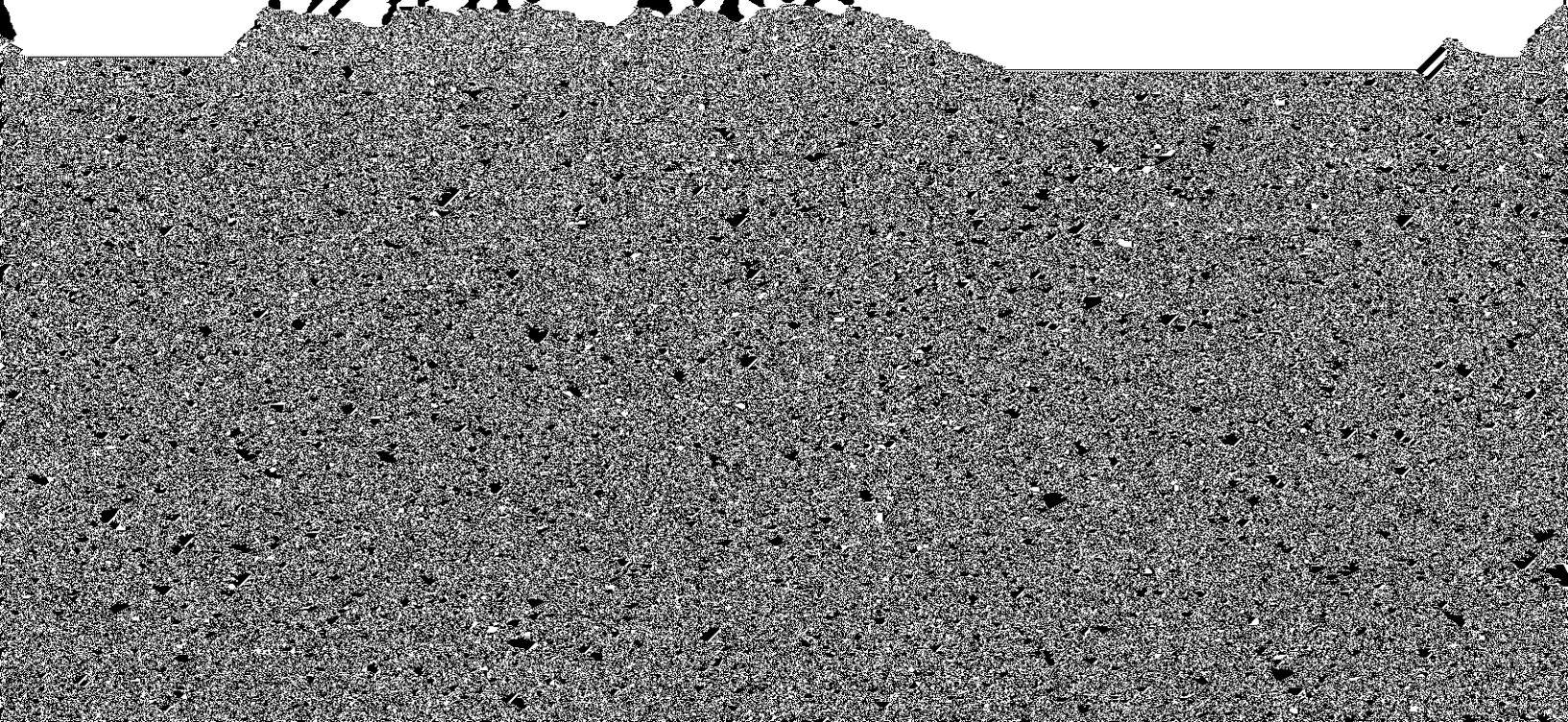


Table of Contents

	Page	
Foreward .....	5	For
The University Objective .....	7	Th
Brief History of Boston College .....	7	A E
Boston College Profile .....	9	Bo
<b>Administration &amp; Faculty</b>		
Trustees of Boston College, December, 1972 - September, 1991 .....	12	9
Chart of Administration .....	12	
Board of Trustee Membership .....	13	
Board of Trustee Chairmen .....	14	
Trustee Associate Membership .....	14	
Officers of the University .....	14	
Academic Deans .....	14	
Department Chairmen and Chairwomen .....	14	
University Administrators .....	16	
Professional Administrators and Support Staff Personnel .....	16	
Faculty:		
by School .....	18	
Full-Time .....	18	
by School and Rank .....	19	
by School and Gender .....	19	
by Highest Earned Degree and Rank .....	20	
by Highest Earned Degree and Gender .....	20	
by Rank and Gender .....	21	
Full-Time Faculty, Teaching Assistants, and Teaching Fellows:		
by School and Department .....	22	
Average .....		

	<b>Page</b>
Full-Time Equivalent, 3 PT = 1FT Method, Fall 1981 - 90 .....	32
Full-Time Equivalent by School, Fall 1989 and 1990 .....	32
Geographic Distribution of Students, Fall 1990 .....	33
Undergraduate Majors by School, Fall 1979 - 1990 .....	34
Graduate Enrollment by Degree Program and Discipline, 1985-86 through 1989-90 .....	35
Summer Session Enrollment, 1981-1990 .....	35
International Students and Scholars, 1989-90 .....	36
by School .....	36
by Class or by Class of Program .....	36
by Gender and by Country .....	36
by Country .....	37
Degrees Conferred:	
Degree and Gender, 1987 through 1989-90 .....	38
Number of Majors, 1985-86 through 1989-90 .....	39
Undergraduate by Major, 1981-86 through 1989-90 .....	40
Undergraduate by School and Major, 1987-88 through 1989-90 .....	41
Graduate by School, Degree, and Primary Field, 1989-90 .....	42
Dollars of Aid Awarded .....	43
Number of Awards .....	43
Undergraduate Student Graduation Rate .....	44
Senior Survey, Spring 1989: .....	44
Educational Plans, Class of 1989 .....	44
Long-Term Career Plans, Class of 1989 .....	45
<b>Alumni &amp; Development</b>	
Boston College Alumni Clubs .....	48
Alumni Association Board of Directors .....	48
Alumni Awards 1990 .....	48
Regional Analysis .....	49
Geographic Distribution .....	49
Living Alumni by Primary School and Class .....	50
Living Alumni by Gender and Class .....	52
Gifts to the University, 1981-86 through 1989-90 .....	53
Individual Donors by Giving Club, 1981-86 through 1989-90 .....	53
Alumni Donors by Primary School and Class .....	54
<b>Physical Plant</b>	
Buildings Related to Boston College Operations .....	58
Boston College Properties .....	60
Facility Capacities .....	61
Dining Facilities .....	62
Offices .....	62
Classrooms .....	63
Summary of Building Use .....	63
Residence Hall Capacities .....	64

**Finance**

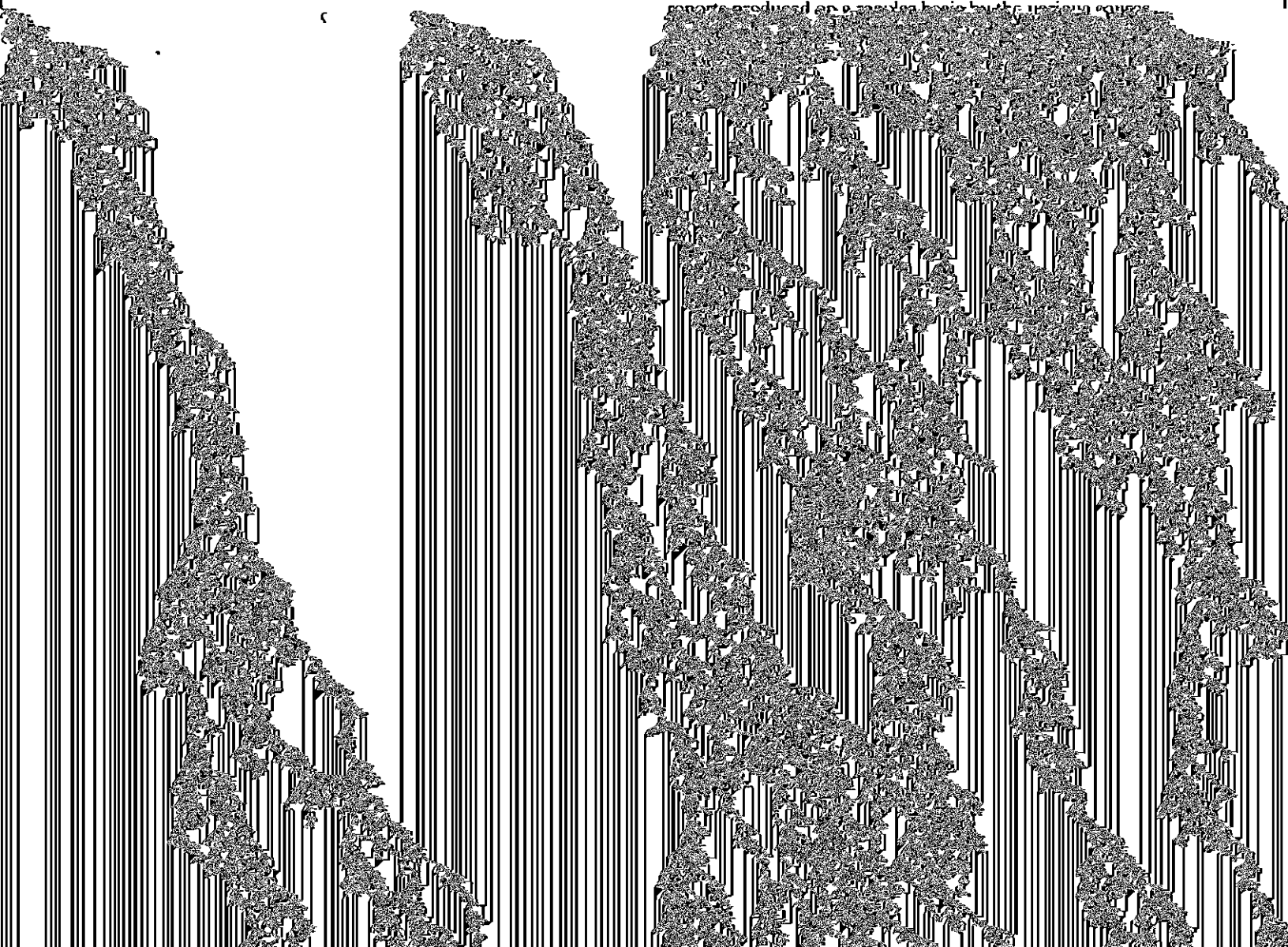
---

## Foreword

The *Boston College Fact Book* is a summary of significant statistics gathered from various sources throughout the University. Once again, we wish to extend sincere thanks and appreciation for the excellent cooperation and assistance received from these many sources.

The purpose of the *Fact Book* is to produce a single-source publication and reference document touching upon and integrating all aspects of the institution's people and its operations. We do wish to point out to all users that the information presented herein was compiled at a specific time — July-September, 1990 — to reflect the Academic Year 1989-1990, as well as the most current enrollment statistics for 1990-1991.

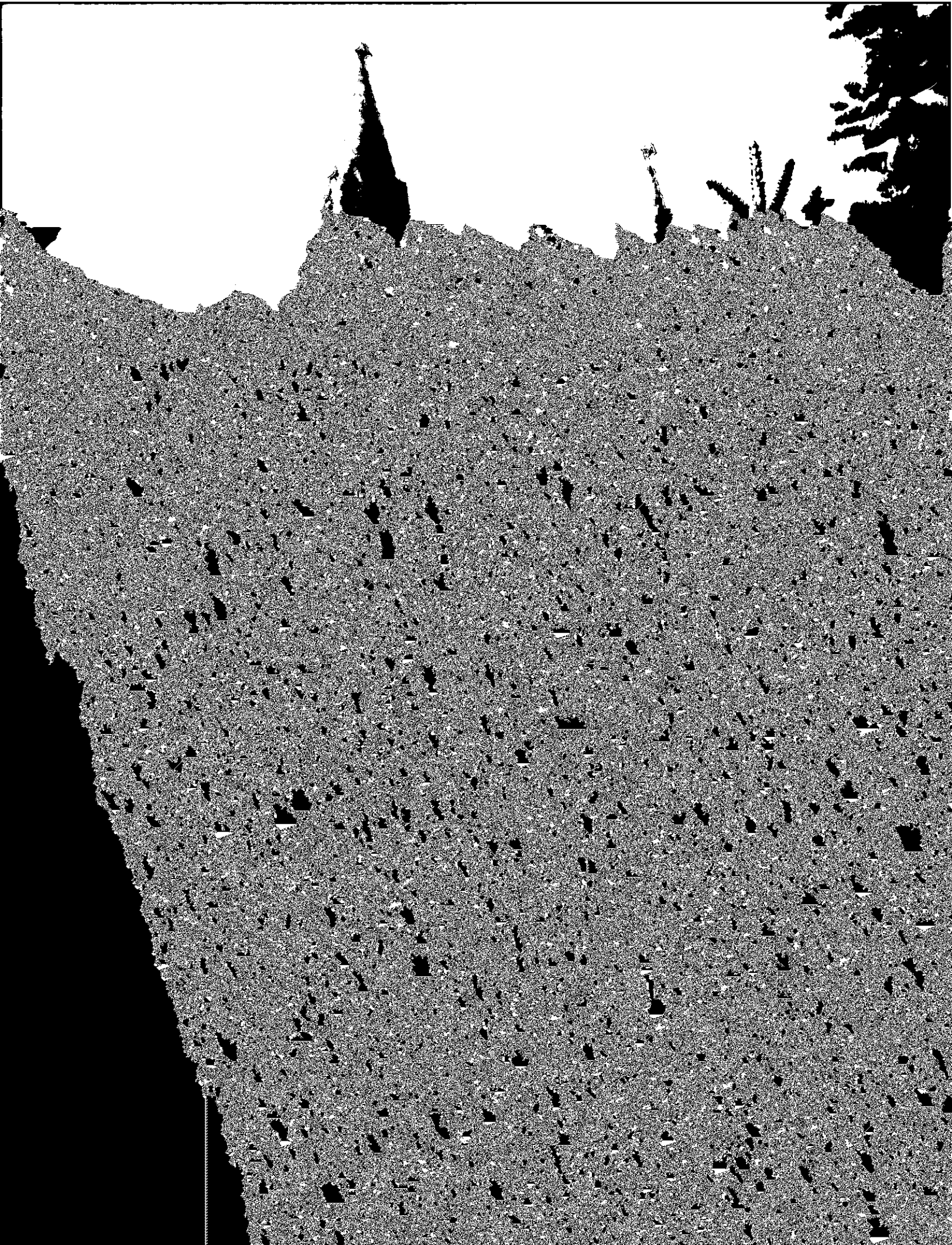
The majority of the information is extracted from management reports produced on a regular basis by the various sources





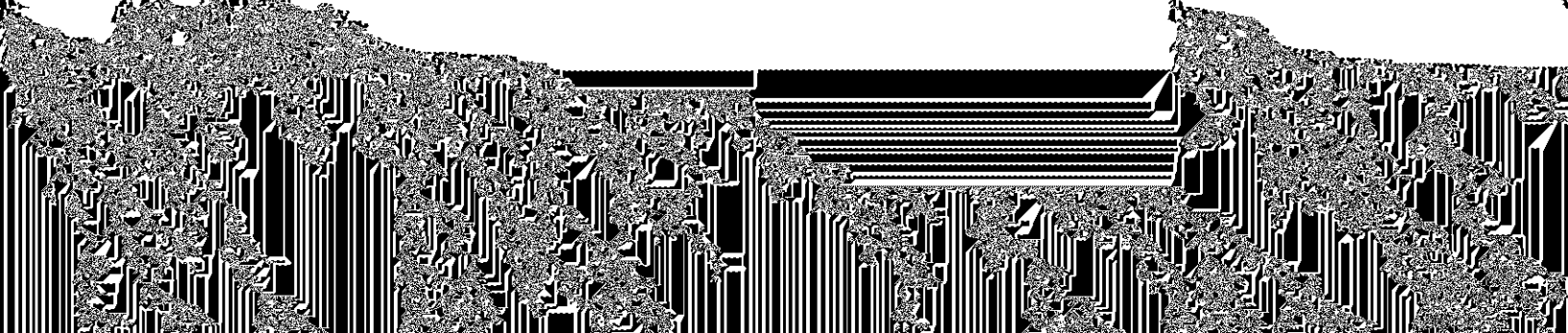






## Boston College Profile

<b>Undergraduate Admissions (Class of 1994)</b>	
Applicants	12,403
Enrollees:	
Men	1,053
Women	1,074
<b>Total Freshman Class</b>	<b>2,127</b>
<b>Enrollment (Full- and Part-Time; Fall, 1990)</b>	
Undergraduate	10,218
Graduate & Professional	4,297
<b>Total Enrollment</b>	<b>14,515</b>
<b>Degrees Conferred (1989-1990)</b>	
Undergraduate	2,274
Graduate & Professional	1,234
<b>Total Degrees Conferred</b>	<b>3,508</b>
<b>Alumni (Fall, 1990)</b>	<b>98,611</b>
<b>Faculty (1989-1990)</b>	
Full-Time Faculty	573
Part-Time Faculty (FTE)	140
Teaching Assistants	182
Teaching Fellows	147
<b>Professional, Administrative, and Support Staff (Fall, 1990)</b>	
Total Professional, Administrative Staff	699
Total Secretarial, Clerical, Technical	605
Total Buildings & Grounds, Plant Services	483
<b>Libraries — (Total Holdings) — Volumes (1990)</b>	<b>1,192,603</b>
<b>Physical Plant (Fall, 1990)</b>	
Acres (owned properties):	
Chestnut Hill Campus	115.3
Newton Campus	40.3
Other	29.1
<b>Total Acres</b>	<b>184.7</b>
Buildings (utilized properties):	
Administrative/Academic	33
Student Housing	26
Other	24
<b>Total Buildings</b>	<b>83</b>















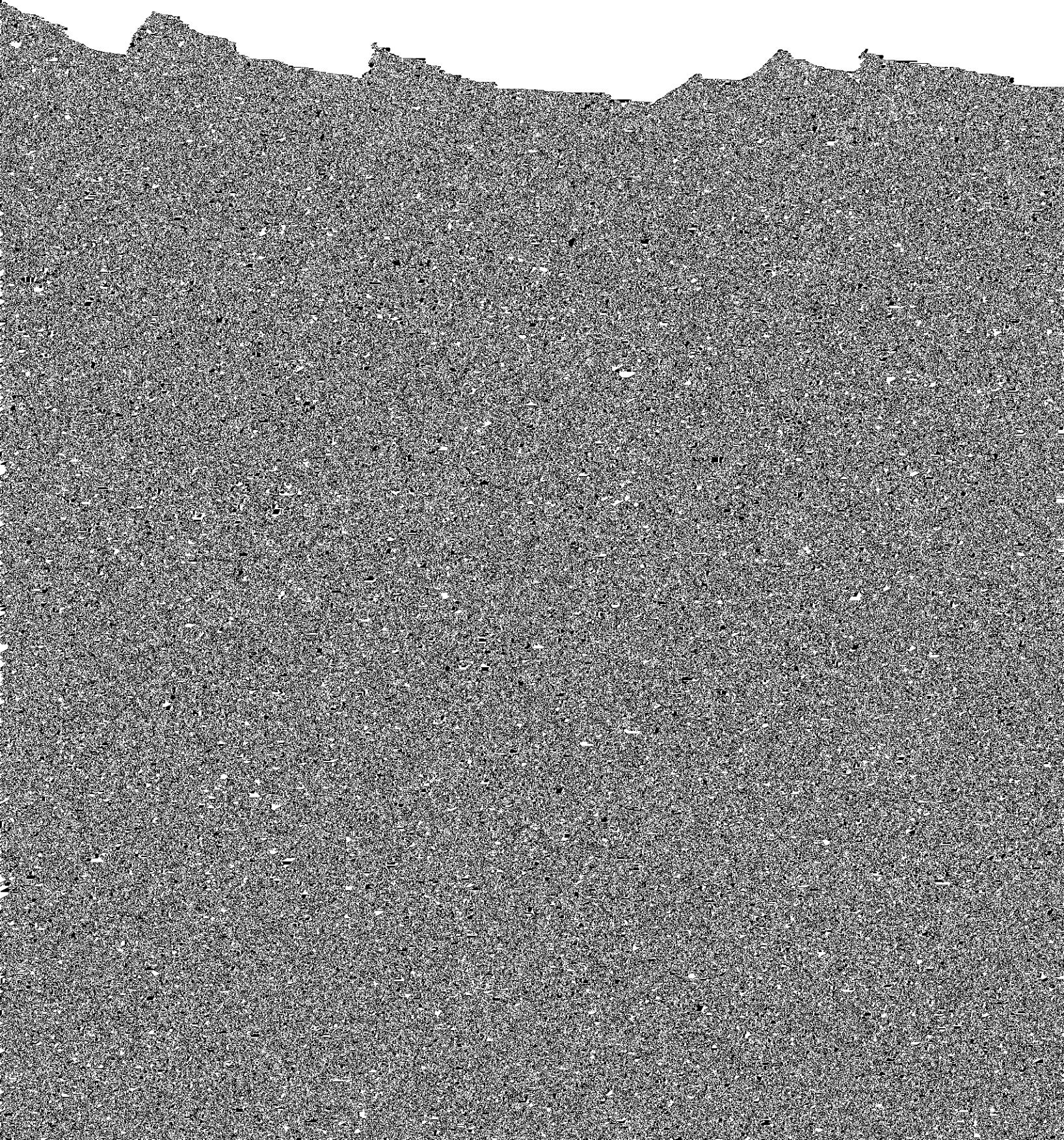




---

**Academic Deans**

**Department Chairmen and Chairwomen**















---

**Full-Time Faculty, Teaching Assistants, and Teaching Fellows**  
**By School and Department, 1989-1990**

---

**Full-Time  
Faculty**

**Teaching  
Assistants**

**Teaching  
Fellows**

---

*Arts & Sciences*

















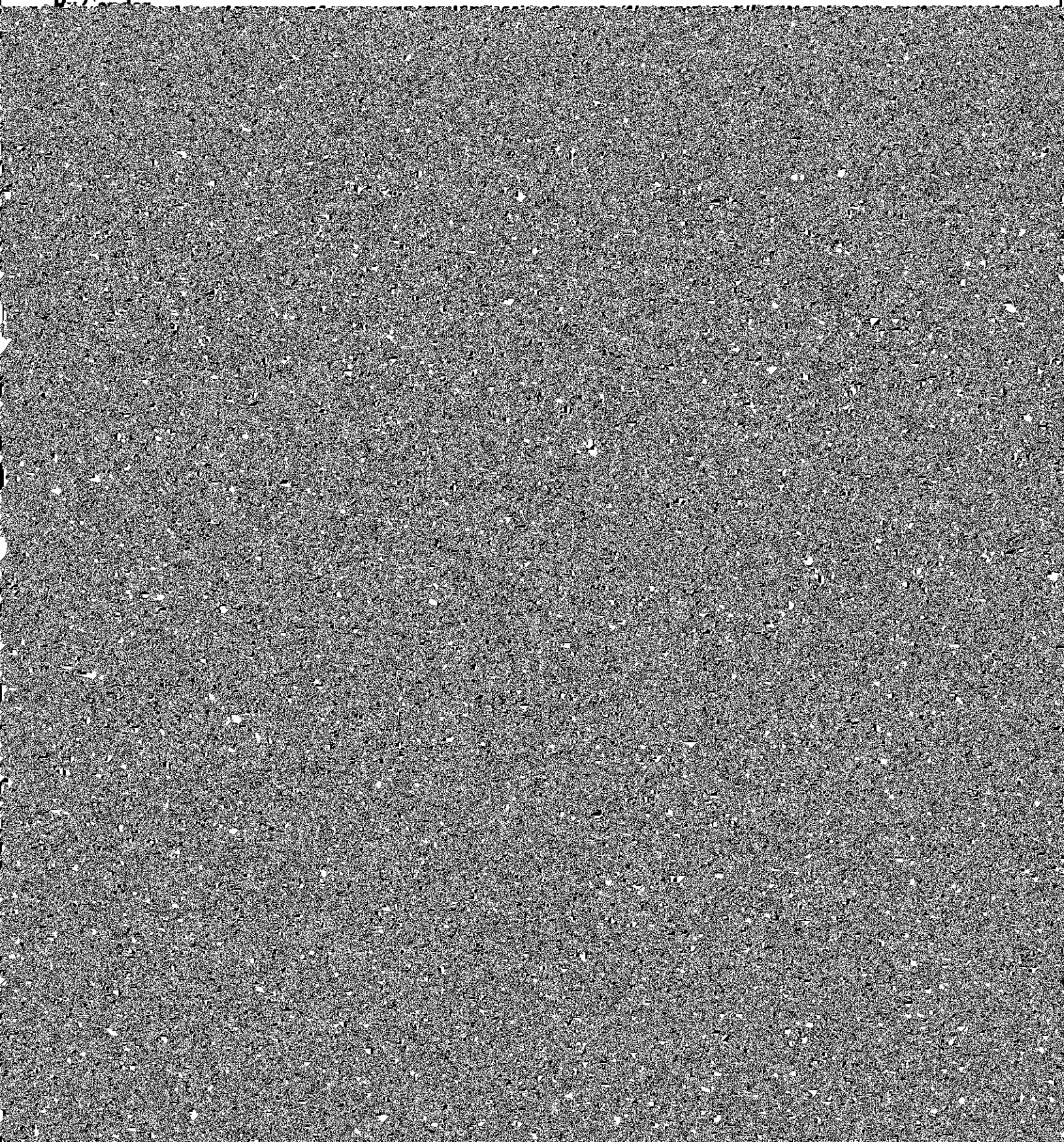




---

**AHANA and International Student Enrollment, Fall 1990\***

**By Carol**



**Student Enrollment\***

**Full-Time Equivalent**

Year	Undergraduate		Graduate/ Professional		Total
	Evening	Total	Professional	Total	
1981-82	8,589	8,589	947	9,536	2,454
1982-83	8,500	8,500	928	9,428	2,432
1983-84	8,616	8,616	837	9,453	2,382
1984-85	8,579	8,579	897	9,476	2,374
1985-86	8,431	8,431	839	9,270	2,314
1986-87	8,429	8,429	829	9,258	2,363
1987-88	8,646	8,646	800	9,446	2,407
1988-89	8,756	8,756	857	9,613	2,588
1989-90	8,638	8,638	825	9,463	2,682
1990-91	8,578	8,578	802	9,380	2,811

\* Method of computation: three part-time students equal one full-time equivalent student.  
Source: Registrar

**Full-Time Equivalent Enrollment\***

Fall 1989 and 1990				By School	
Year	1989	1990	Graduate & Professional	1989	1990
Undergraduate	5,493	5,389	Graduate Arts & Sciences**	1,293	1,308

---

**Geographic Distribution of Students\***  
**Fall 1990**

---

	<b>Undergraduate</b>	<b>Evening</b>	<b>Graduate Arts &amp; Sciences</b>	<b>Social Work</b>	<b>Graduate Management</b>	<b>Law School</b>	<b>Total</b>
Alabama	11	-	2	-	1	-	14
Alaska	-	-	-	-	-	-	-
Arizona	18	-	1	-	-	1	20
Arkansas	7	-	1	-	-	-	8
California	184	2	25	1	3	18	233

---

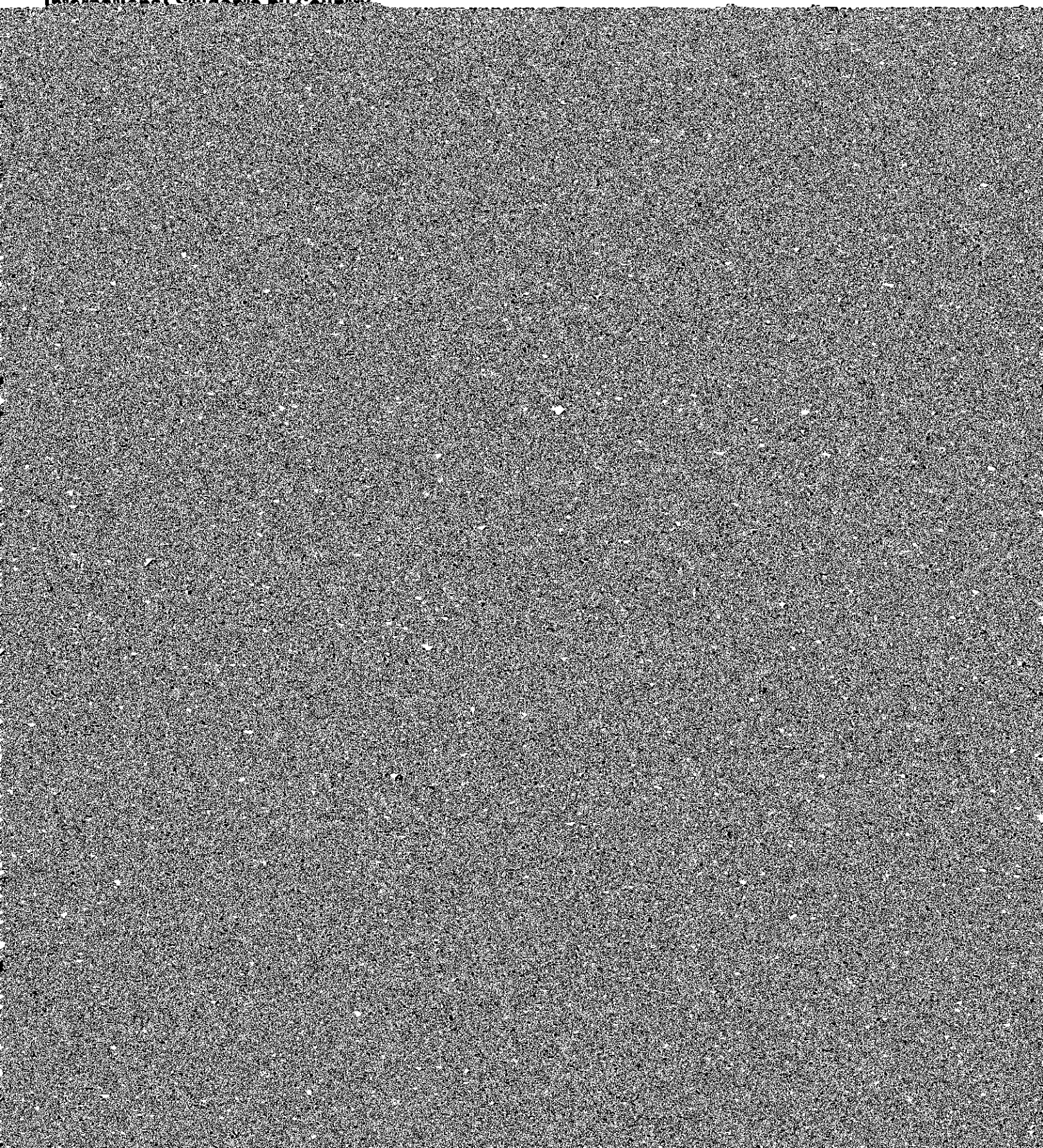






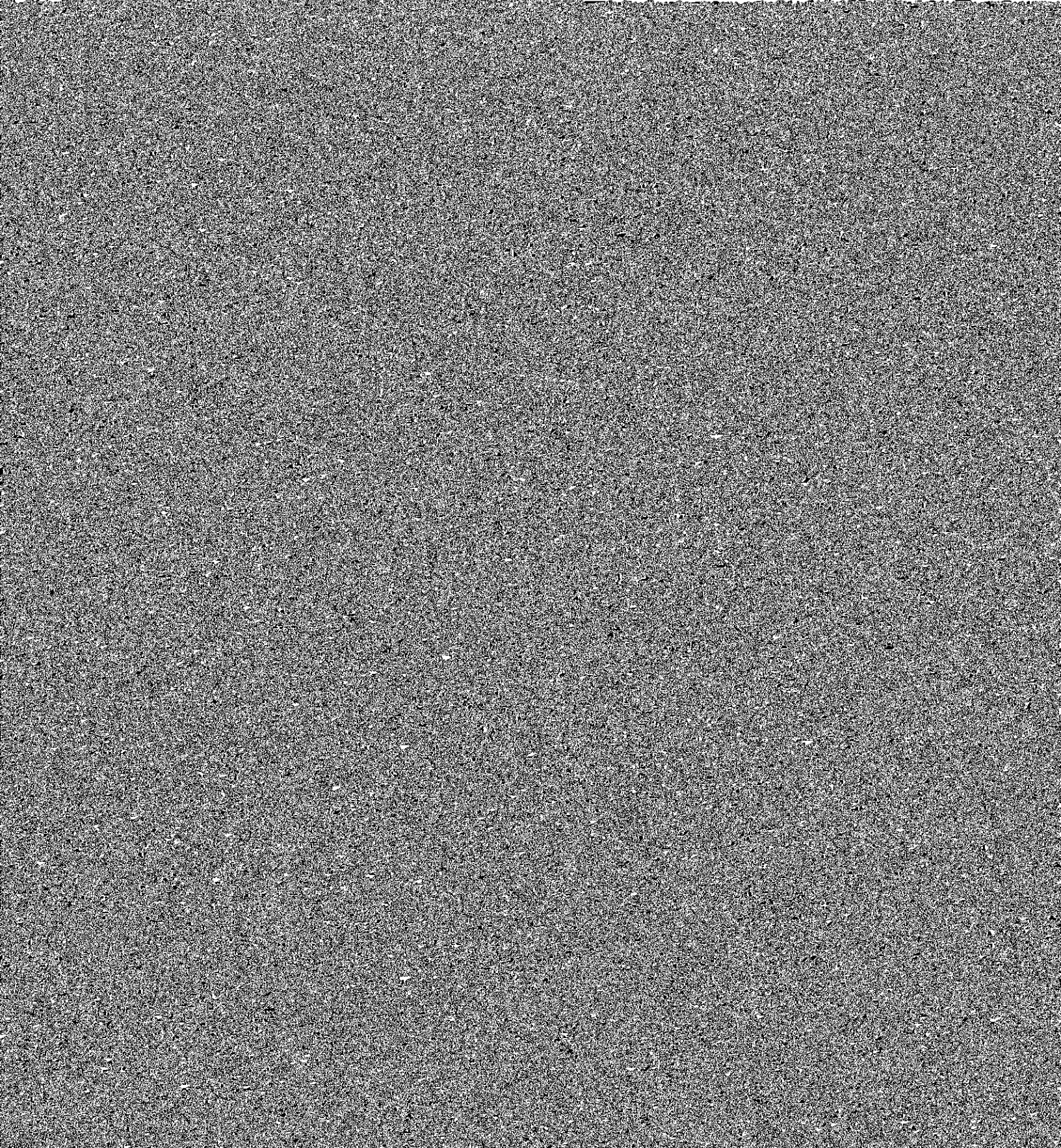
---

**International Students by Country**





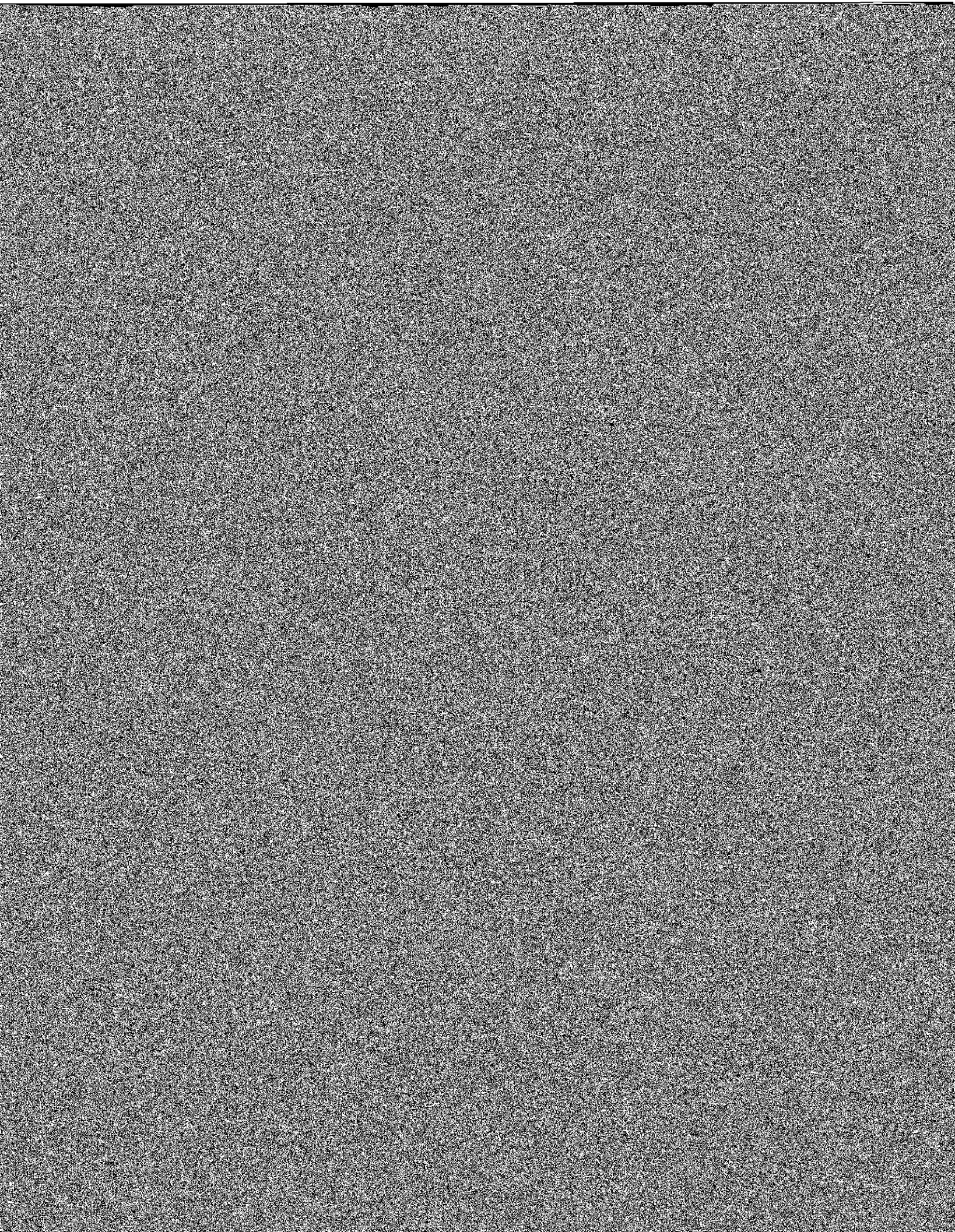
**Undergraduate and Graduate Degree Completions**











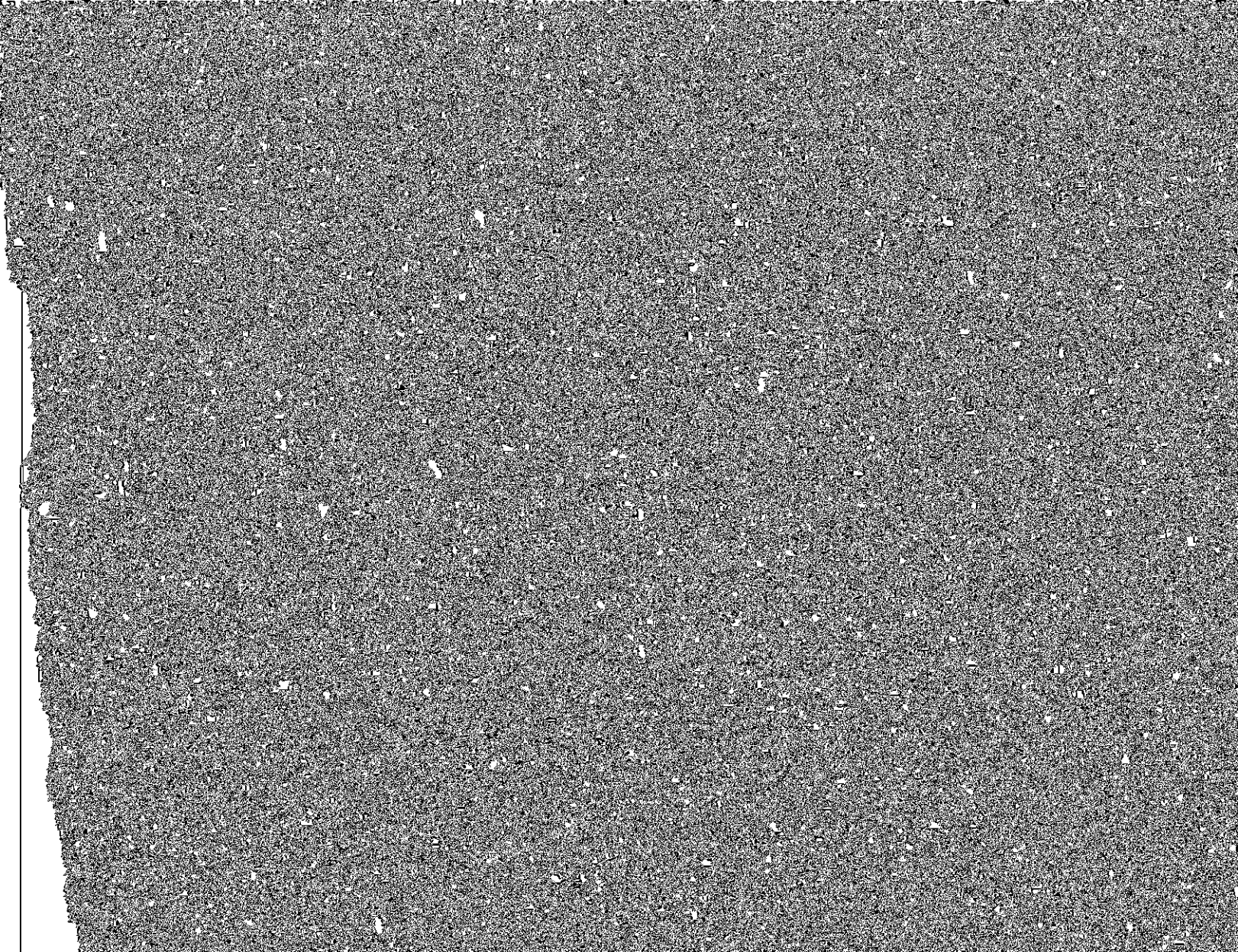








ALUMNI &  
DEVELOPMENT



















---

## Alumni Donors

By Primary School and Class, 1989-90

---

Class	A&S	Ed	Met	Nursing	Evening College	Newton College	Grad. A&S	Grad. Mat	Social Work	Low	Weston Theol	EX Alumni	Total	Class
-------	-----	----	-----	---------	-----------------	----------------	-----------	-----------	-------------	-----	--------------	-----------	-------	-------

The body of the table is obscured by a dense, dark, grainy pattern, likely due to a scanning artifact or intentional redaction. No data is legible in this section.

















---

**Dining Facilities**  
**Fall 1990**

---

<b>Name</b>	<b>Location</b>	<b>Capacity</b>
The Club	O'Connell House	56
Eagle's Nest Snack Bar	McElroy Commons	472
Faculty Dining Room	McElroy Commons	146
Lyons Cafeteria	Lyons Hall	415
McElroy Dining Hall	McElroy Commons	850
McElroy Cafe	McElroy Commons	96
Newton Commons Cafeteria	Stuart House	326





FINANCE







---

## Boston College Tuition Restated in 1967 Dollars

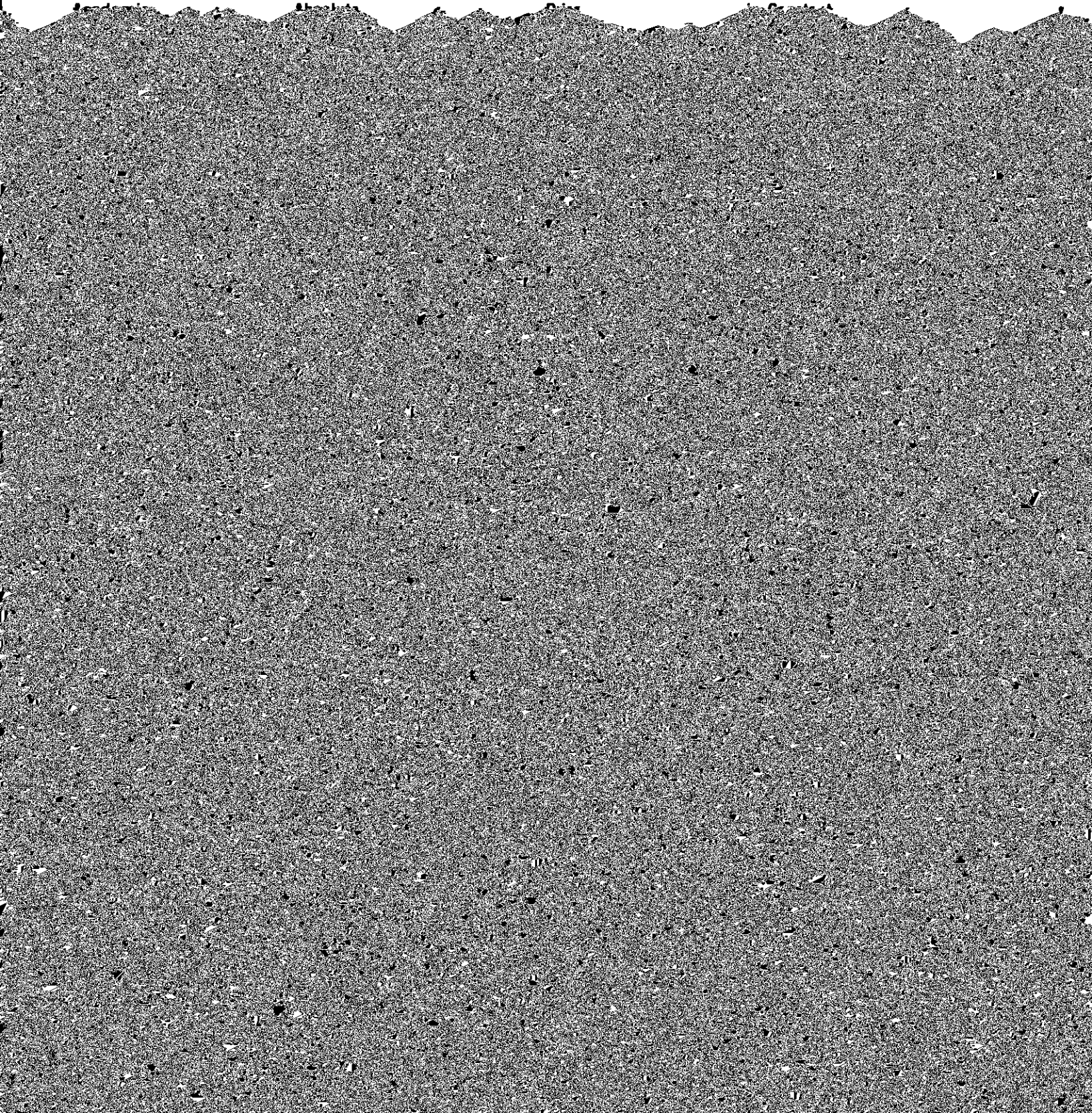
### Effect of Inflation and Real Growth

---

Tuition in

Consumer

Tuition







---

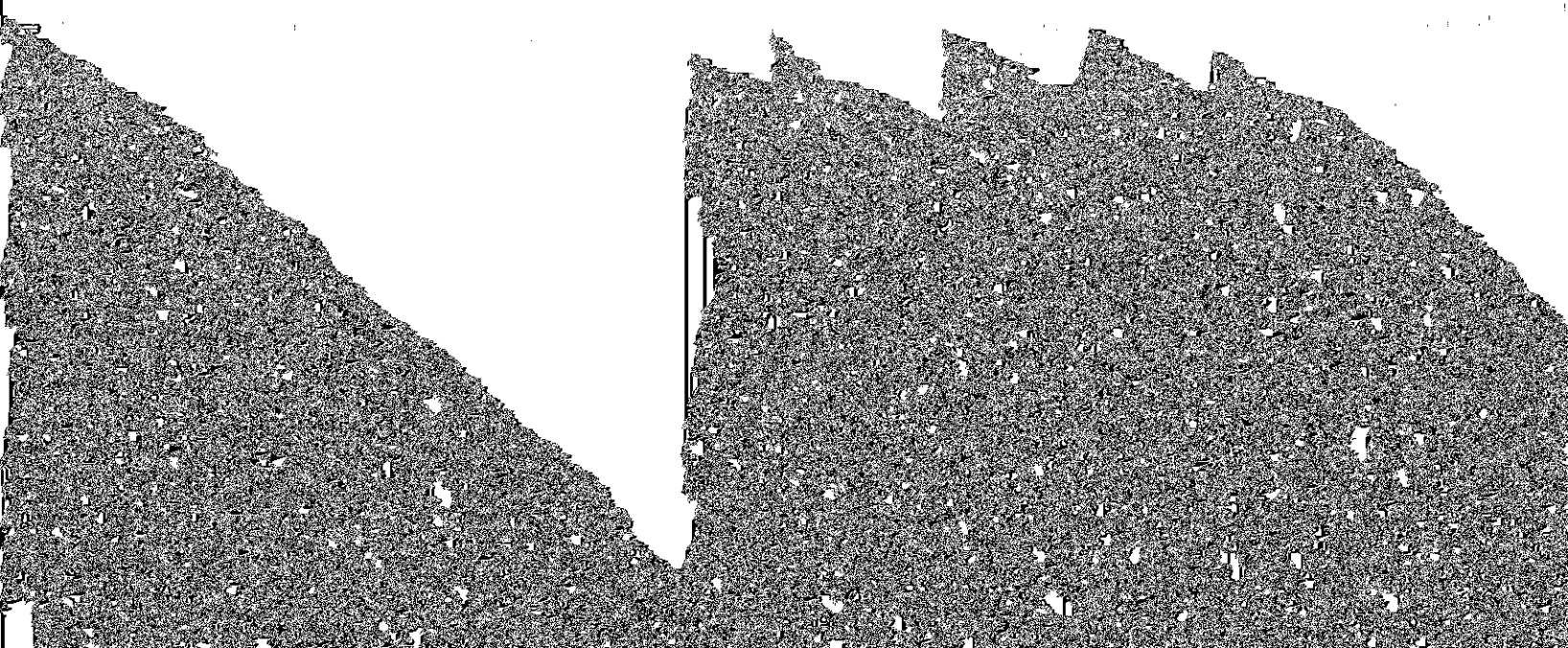
**Selected Contract and Grant Awards\***  
**1989-1990**

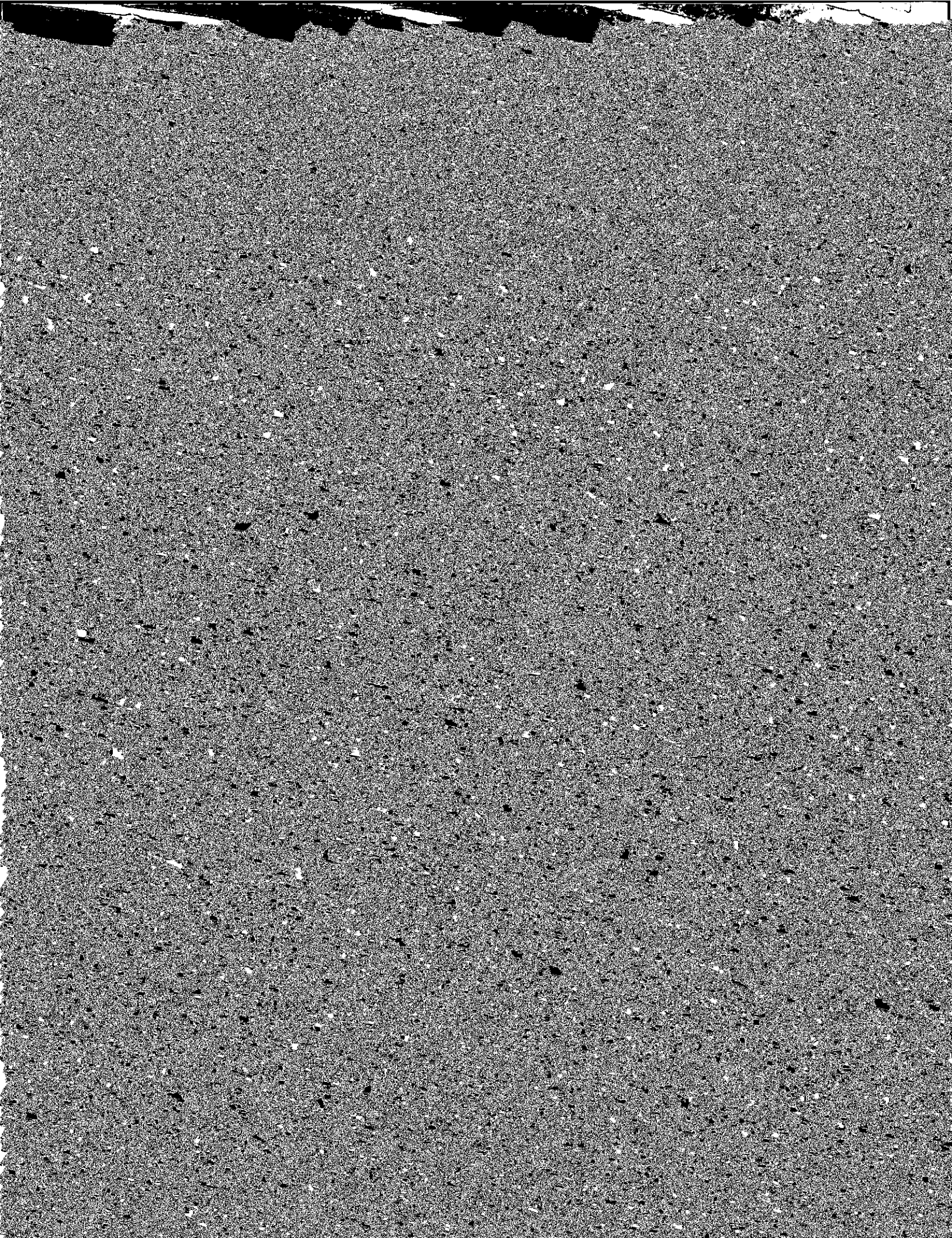
---

Title	Source of Funding	Amount
<b>Biology Department</b> Regulation of Symbiotic Plant Genes	National Institutes of Health	\$ 111,121



LIBRARIES &  
INFORMATION TECHNOLOGY





## **Boston College Libraries**

**Bapst Library**  
Middle Campus

**Law Library**  
Kenny-Cottle Library, Newton Campus

**School of Social Work Library**  
McGuinn Hall, Lower Level

**The John J. Burns Library of  
Rare Books and Special Collections**

**Newton Resource Center (Undergraduate)**

**Educational Resource Center**



---

**John J. Burns Library of  
Rare Books and Special Collections**

The University's special collections, including the

Howard P. Gill Papers










---

## Management Information Systems

The department of Management Information Systems (MIS) develops and maintains the University's information systems. Each year MIS receives 450 to 500 requests for changes or enhancements to existing programs and development of new systems. The department also provides technical support to the University's various departments.







# ATHLETICS







---

## Intercollegiate Athletic Accomplishments 1989-1990

### Football

Coach Jack Bicknell's football team won only two of 11 games, but were highly competitive, losing games by margins of five points (to Ohio State), by four (to Penn

Mar's Bicknell



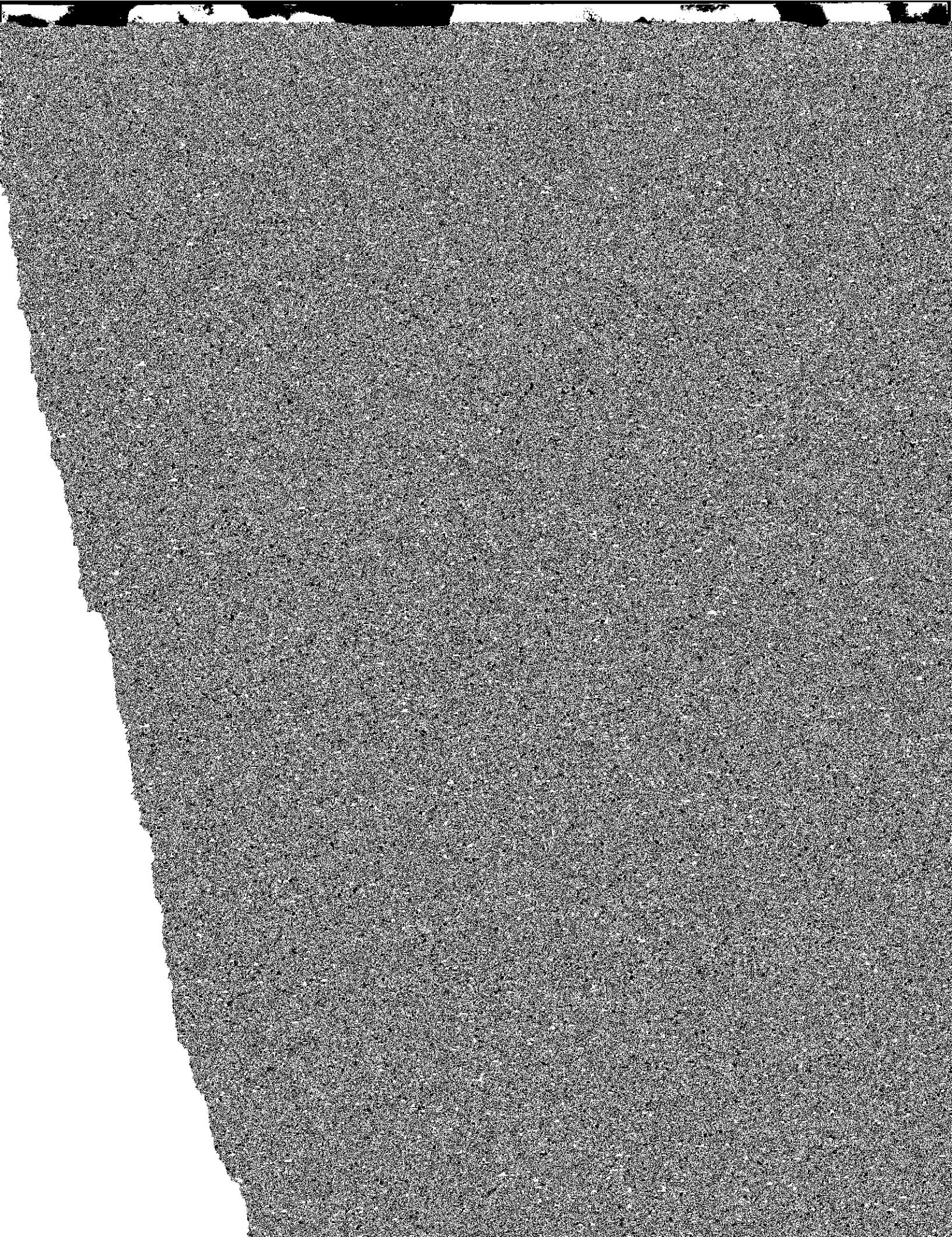








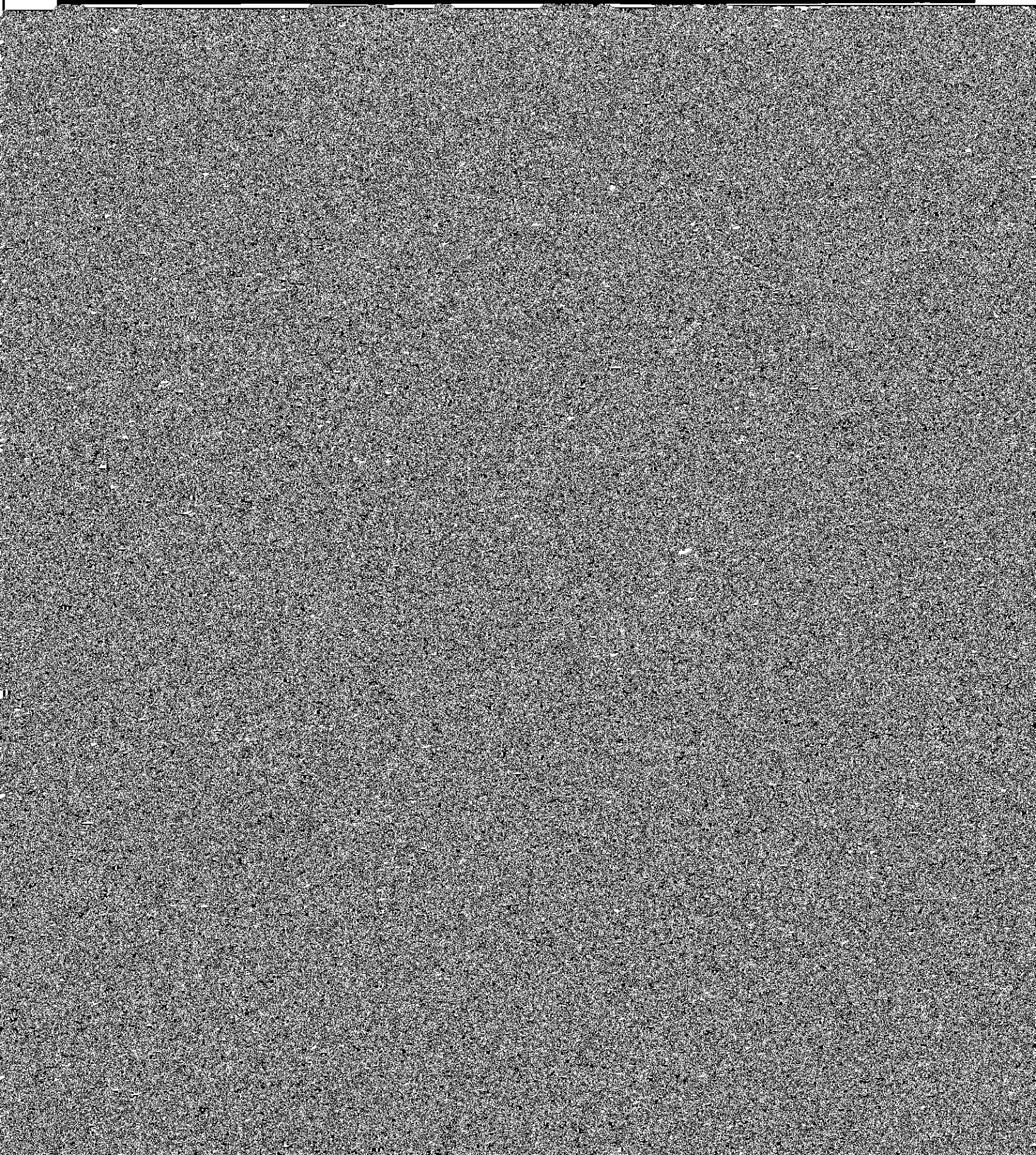




















# Fact Book Index

Academic Calendars, 100	Educational Plans of Seniors, 44	Enrollment, Evening College, 29-30
Academic Deans, 16	Enrollment, Full-Time Equivalent, 33	Enrollment, Full-Time Freshman by Year and Gender, 20
Academic Department Locations, 93	Enrollment, Graduate and Undergraduate, by School, 17	Enrollment, International Students, 36-37
Accounting Agencies, 90	Administrators, University, 17	Enrollment, Undergraduate and Graduate by School, Gender, and Full and Part-Time, 29-30
Administration and Faculty, 12	Admission Association Board of Directors, 48	Enrollment, Undergraduate and Graduate by School, Gender, and Full and Part-Time, 29-30
Admission and Faculty, 12	Alumni Awards, 48	Enrollment, Undergraduate and Graduate by School, Gender, and Full and Part-Time, 29-30
Admission and Faculty, 12	Alumni Clubs, 48	Enrollment, Undergraduate and Graduate by School, Gender, and Full and Part-Time, 29-30
Admission and Faculty, 12	Alumni Donors by Primary School and Class, 54-55	Enrollment, Undergraduate and Graduate by School, Gender, and Full and Part-Time, 29-30
Admission and Faculty, 12	Alumni Geographic Analysis by State, 49	Enrollment, Undergraduate and Graduate by School, Gender, and Full and Part-Time, 29-30
Admission and Faculty, 12	Alumni Regional Analysis, 49	Enrollment, Undergraduate and Graduate by School, Gender, and Full and Part-Time, 29-30
Admission and Faculty, 12	Applications, Acceptances and Enrollment, Freshman, 26	Enrollment, Undergraduate and Graduate by School, Gender, and Full and Part-Time, 29-30
Admission and Faculty, 12	Students, 28	Enrollment, Undergraduate and Graduate by School, Gender, and Full and Part-Time, 29-30
Admission and Faculty, 12	Archives, 79	Enrollment, Undergraduate and Graduate by School, Gender, and Full and Part-Time, 29-30
Admission and Faculty, 12	Association Membership, 98	Enrollment, Undergraduate and Graduate by School, Gender, and Full and Part-Time, 29-30
Admission and Faculty, 12	Administration and, 12-23	Enrollment, Undergraduate and Graduate by School, Gender, and Full and Part-Time, 29-30
Admission and Faculty, 12	Association by Rank, 25	Enrollment, Undergraduate and Graduate by School, Gender, and Full and Part-Time, 29-30
Admission and Faculty, 12	Med Degree and Gender, 21	Enrollment, Undergraduate and Graduate by School, Gender, and Full and Part-Time, 29-30
Admission and Faculty, 12	Med Degree and Rank, 21	Enrollment, Undergraduate and Graduate by School, Gender, and Full and Part-Time, 29-30
Admission and Faculty, 12	Balance Sheet, Condensed, 68	Enrollment, Undergraduate and Graduate by School, Gender, and Full and Part-Time, 29-30
Admission and Faculty, 12	Board of Trustees Meeting, 12	Enrollment, Undergraduate and Graduate by School, Gender, and Full and Part-Time, 29-30
Admission and Faculty, 12	Facilities, 61	Enrollment, Undergraduate and Graduate by School, Gender, and Full and Part-Time, 29-30
Admission and Faculty, 12	Athletics, 86-91	Enrollment, Undergraduate and Graduate by School, Gender, and Full and Part-Time, 29-30
Admission and Faculty, 12	Evening College Enrollment, 29-30	Enrollment, Undergraduate and Graduate by School, Gender, and Full and Part-Time, 29-30
Admission and Faculty, 12	Faculty, 61	Enrollment, Undergraduate and Graduate by School, Gender, and Full and Part-Time, 29-30
Admission and Faculty, 12	Faculty, Administration and, 12-23	Enrollment, Undergraduate and Graduate by School, Gender, and Full and Part-Time, 29-30
Admission and Faculty, 12	Faculty, by Highest Earned Degree and Gender, 21	Enrollment, Undergraduate and Graduate by School, Gender, and Full and Part-Time, 29-30
Admission and Faculty, 12	Faculty, by Highest Earned Degree and Rank, 21	Enrollment, Undergraduate and Graduate by School, Gender, and Full and Part-Time, 29-30

ook Index (Continued)

Fact Bo

by Degree Program and	Senior Survey, 44-45	Graduate Enrollment by
by Gender, 29-30	Sources of <i>Fact Book</i> Information, 100	Discipline, 35
by Time, 29-30	Special Collections, 78	Graduate Enrollment by
Sports Participation Statistics, 88	Sports Records, 89	Graduate Enrollment by School, 29-30
Sports Schedules, 90-91	Student Credit Hours by School, 29	Graduate Enrollment, Full- and Part-Time
Students, 26-45	Students, 26-45	Graduation Rates, 44
Summer Session Enrollment, 25	Honorary Degrees, Types Granted, 97	History, Boston College, 7
Teaching Fellows, Full-time Faculty Teaching, 100	International Student and Scholar Statistics, 31-32	Honorary Degrees, 97-98
Transfer Students, Enrollment by Previous Institution, 11	Intramural Sports, 89	
Libraries, 76-79	Language Laboratory, 79	and Gender, 28
Library Circulation Statistics, 78	Tuition and Fees, 69-70	Trustee Associate Memberships
Undergraduate and Graduate Financial Aid, 43	Undergraduate Degrees Conferred, 38-41	Trustees, Membership, Board of
Undergraduate Enrollment by School, 29-30	Undergraduate Enrollment by School, 29-30	Library
Management Information		Library







