

## Foreword

---

The *Boston College Fact Book* captures and summarizes much of the important current and historical information about Boston College. The *Fact Book* is intended to serve as a reference for information about the University's faculty, students, alumni, personnel, facilities, and budget.

The 2003-2004 *Boston College Fact Book* reflects year-end data from the 2002-2003 fiscal and academic years. In certain instances, information relating to the fall of 2003 (academic year) produced on a regular basis by the various source offices. Inquiries and comments regarding specific data should be addressed to the responsible office (noted at the bottom of each item). The *Fact Book* is also available in its entirety at <http://www.bc.edu/factbook>. We welcome your comments and suggestions for additional information that might be included or improvements in the way information is presented.

James Kreinbring, Editor  
Christine Buscemi  
Margaret Ryan  
April 2004

## The Mission of Boston College

---

Strengthened by more than a century and a quarter of dedication to academic excellence, Boston College commits itself to the highest standards of teaching and research in undergraduate, graduate, and professional programs and to the pursuit of a just society through its own accomplishments, the work of its faculty and staff, and the achievements of its graduates. It seeks both to advance its place among the nation's finest universities and to bring to the company of its distinguished peers and to contemporary society the richness of the Catholic intellectual ideal of a mutually illuminating relationship



**International Students and Scholars:**

by School .....	39
by Class or Program.....	39
by Gender and Program .....	39
by Coui.	

Digital Library Services..... 75  
John J. Burns Library of Rare Books and Special Collections ..... 76  
Academic Development Center ..... 77  
University Archives..... 77

## A Brief History of Boston College

---

Boston College was founded by the Society of Jesus in 1863, and is one of twenty-eight Jesuit colleges and universities in the United States. With three teachers and twenty-two students, the school opened its doors on September 5, 1864. At the outset and for more than seven decades of its first century, the college remained an exclusively liberal arts institution with emphasis on the Greek and Latin classics, English and modern languages and with more attention to philosophy than to the physical or social sciences. Religion, of course, had its place in the classroom as well as in the nonacademic life of the college.

Originally located on Harrison Avenue in the South End of Boston, where it shared quarters with the Boston College High School, the College outgrew its urban setting toward the end of

## A Boston College Chronology\*

- 1857** Father John McElroy, S.J., purchased property in the South End of Boston for a new college.
- 1863** Gov. John A. Andrews signed the charter of Boston College, April 1. First meeting of the Boston College trustees was held on July 6.
- 1864** Boston College opened on September 5, with Father John Bapst, S.J., as president and Father Robert Fulton, S.J., as dean. Twenty-two students admitted.
- 1877** First Commencement was held. Nine students received A.B. degrees, June 28.
- 1883** The Stylus, the College literary magazine, founded.
- 1907** Father Thomas Gasson, S.J., named president; purchased 31-acre Lawrence farm in Chestnut Hill for new campus.
- 1913** Gasson Hall completed. First graduation held at the Heights, June 18. Four classes enrolled in Gasson in September.
- 1918** Conscription and voluntary enlistment for World War I reduced the College enrollment to 125 in October, down from 671 two years earlier.
- 1919** Boston College won its first major football victory, 5-3 over favored Yale at New Haven. First issue of The Heights, student weekly, printed November 17.
- 1923** Baseball team beat Holy Cross 4-1 before 30,000 at Braves Field, June 18.
- 1924** Summer School started.
- 1925** Graduate School of Arts and Sciences started.
- 1928** Bapst library opened, the fourth of the early Maginnis and Walsh buildings. Weston Observatory, the seismological station, founded.
- 1929** Law School opened at 11 Beacon Street. Boston Evening College started as "Boston College Intown" at 126 Newbury Street, Boston.
- 1935** Greek requirement for the A.B. degree dropped.
- 1936** Graduate School of Social Work opened at Newbury Street.
- 1938** School of Management opened at Newbury Street as the "College of Business Administration."
- 1940** Cotton Bowl vs. Clemson (3-6) first bowl game.
- 1941** Cardinal O'Connell purchased the Liggett estate, the upper campus, and gave it to the College.
- 1946** To accommodate post war enrollment, army surplus barracks became dormitories on the site of present Campion Hall; a larger office/classroom building was erected on the site of McGuinn, and a recreation building on the site of Cushing Hall.
- 1947** Construction begun on the first permanent building since the completion of Bapst in 1928, to house the College of Business Administration (occupied in September 1948). The School of Nursing opened at 126 Newbury Street.
- 1949** College acquired small reservoir (lower campus) Hockey team won national title at Colorado Springs.
- 1951** Lyons Hall was completed in July.
- 1952** The School of Education opened in September in Gasson Hall. Doctoral programs were begun in Economics, Education, and History, the beginning of increased emphasis on graduate education.
- 1954** Law School moved to St. Thomas More Hall on the Chestnut Hill campus.
- 1955** Claver, Loyola, and Xavier Halls opened, first campus residences constructed by BC. The School of Education moved into Campion Hall.
- 1957** Graduate School of Management founded. Alumni Stadium dedicated September 21.
- 1958** Latin no longer required for the A. B. degree. The College of Arts and Sciences Honors Program and the Scholar of the College Program were begun. The original gymnasium, Roberts Center, and the first hockey rink, McHugh Forum, were opened.
- 1959** The Board of Regents, advisory to the trustees and administration, was established.
- 1960** The Nursing School occupied its campus building, Cushing Hall. Three more student residences, named for the early bishops of Boston, Cheverus, Fenwick, and Fitzpatrick, were completed.
- 1961** McElroy Commons opened.
- 1963** The Boston College Centennial Convocation was addressed by President John F. Kennedy on April 20. The Self-Study of the College of Arts and Sciences led to a new core curriculum, a reduction in the course load, election of department chairmen, the establishment of Educational Policy committees, and sabbaticals.
- 1964** Carney Hall opened. Welch, Williams, and Roncalli residences were occupied.
- 1966** Higgins Hall was dedicated in November.
- 1968** The Board of Regents joined the Jesuit trustees to form the Board of Directors, October 8. The Black Talent Program was started, precursor to AHANA Student Programs.

- 1971** The office of president of Boston College and rector of the Boston College Jesuit community were separated on January 1. Installation of Omicron Chapter, Phi Beta Kappa took place on April 6.
- 1970** Women admitted for degrees in all undergraduate colleges. The modular residences were placed on the lower campus. PULSE, an academic/social action program, was started. The Campus School for multi-handicapped children was begun.
- 1972** Father J. Donald Monan, S.J., succeeded Father W. Seavey Joyce, S.J., as president, September 5. The trustees voted to eliminate the Board of Directors and to expand the Board of Trustees to include laymen, November 19. The newly structured Board of Trustees, with 35 members (13 Jesuits), elected Cornelius Owens '36 chairman. The Women's Center was established.
- 1973** The Long-Range Fiscal Planning Committee presented to the Trustees a plan for balanced budgets for the succeeding five years.
- 1974** Newton College of the Sacred Heart became part of Boston College (announced March 11).
- 1975** The Law School moved to the Newton Campus. Edmond's Hall was occupied in September.
- 1976** The New Heights Advancement Campaign to raise \$21 million was begun in April. Over the next five years more than \$25 million was raised.
- 1979** One thousand friends of Speaker of the House Thomas P. O'Neill, '36, gathered in Washington to establish the O'Neill Chair in American Politics, December 9. The Graduate School of Social Work established a doctoral degree program. The Recreation Complex named for Athletic Director William J. Flynn.
- 1980** The Jesuit community endowed the Thomas I. Gasson, S.J., Chair for distinguished Jesuit scholars.
- 1982** Walsh Hall residence dedicated to former president Michael P. Walsh, S.J., October 7.
- 1984** O'Neill Library dedicated to Speaker Thomas P. O'Neill, October 14. Doug Flutie awarded Heisman Trophy.
- 1985** The E. Paul Robsham, Jr., Theater Arts Center was dedicated on October 25.
- 1986** Dedication of renovated Bapst Library, dedication of Burns Library, April 22. Goals for Nineties (planning document) published. Alumni Association moved to Alumni House on the Newton Campus. St. Patrick's Day dinner took place in Washington honoring Speaker Thomas P. O'Neill. Speakers included President Ronald Reagan, former President Gerald Ford, and Bob Hope. Two million dollars was raised for BC scholarships. Five-year \$125 million Campaign for Boston College started. The dismantling of McHugh Forum was begun to make way for Conte Forum.
- 1987** The Carroll Graduate School of Management's doctoral program in finance was approved by the Trustees. The Jesuit Institute, funded by a \$1.5 million gift from the Jesuit community, with a matching University commitment, was established to support exploration into the religious and ethical questions that emerge through the intersection of faith and culture.
- 1988** The first students enrolled in the new Nursing Ph.D. program. The Music Program became a department of the College of Arts and Sciences. Vouté Hall and its companion student residence were occupied. The Museum of Art was opened in Devlin Hall.
- 1989** Congressman Silvio O. Conte '49, was present for the dedication of Conte Forum. The School of Management became the Carroll School of Management in honor of Wallace E. Carroll '28. Sister Thea Bowman was awarded an honorary degree and AHANA House was named for her in October. Roberts Center was razed to make room for the Merkert Chemistry Center.
- 1991** Wing added to Campion Hall, with major renovation of the original building.
- 1992** The Eugene F. Merkert Chemistry Center dedicated. The Campaign for Boston College completed, exceeding the \$125 million goal by over \$11 million.
- 1993** Renovated Devlin Hall welcomed occupants: the Department of Geology and Geophysics, the Department of Fine Arts, the Art Museum, and the Admission Office. The football team beat Notre Dame at South Bend, 41-39, when Notre Dame was ranked No. 1 in the country. Renovation of Fulton Hall was begun. The Department of Theater was established.
- 1994** Graduate programs in Nursing and Education separated from the Graduate School of Arts & Sciences. Father Monan established a University Academic Planning Council to map university . ission

---

William P. Leahy, S.J., was inaugurated as the 25th president of Boston College.

**1997** In a rating of graduate schools, *U.S. News & World Report* placed Boston College Law School 22nd in its field, while the Graduate School of Social Work was ranked 14th, the School of Nursing 27th, and the School of Education 28th. In March, Father Leahy was homilist at the annual St. Patrick's Day Mass at the Cathedral of



INSERT PHOTO HERE

---

 Boston College Profile
 

---

<b>Undergraduate Admission (Class of 2007)</b>	
Applicants	22,424
Enrollees	
Men	1,055
Women	1,153
<b>Total Freshman Class</b>	<b>2,208</b>
<b>Enrollment (Full- and Part-Time; Fall 2003)</b>	
Undergraduate	8,851
Advancing Studies (undergraduate)	768
Graduate & Professional	4,760
<b>Total Enrollment</b>	<b>14,379</b>
<b>Degrees Conferred (Academic Year 2002-03)</b>	
Undergraduate	2,225
Advancing Studies (undergraduate)	88
Graduate & Professional	1,509
<b>Total Degrees Conferred</b>	<b>3,822</b>
<b>Alumni (Fall 2003)</b>	<b>137,986</b>
<b>Faculty (Academic Year 2002-03)</b>	
Full-Time Faculty	639
Part-Time Faculty (FTE)	189
Teaching Fellows	184
Teaching Assistants	240
<b>Professional, Administrative, and Support Staff (Fall 2003)</b>	
Total Professional, Administrative Staff	1,147
Total Secretarial, Clerical, Technical	608
Total Facilities Services, Plant Services	555
<b>Libraries — (Total Holdings) — Volumes (2003)</b>	<b>2,029,006</b>
<b>Physical Plant (Spring 2003)</b>	
Acres	
Chestnut Hill Campus	116.9
Newton Campus	40.3
Other	100.3
<b>Total Acres</b>	<b>257.5</b>
Buildings	
Administrative/Academic	51
Student Residence	28
Other	33
<b>Total Buildings</b>	<b>112</b>
<b>Finance (Fiscal Year 2002-03)</b>	
Total Operating Revenues and Other Support	\$515.2 million
Total Expenditures	\$515.2 million

---

## Board of Trustee Membership 2003-2004

---

**Gregory P. Barber, '69**

Chairman

Gregory P. Barber & Associates, Inc.

**Peter W. Bell, '86**

Managing Director

Stowe Capital

**\*Geoffrey T. Boisi, '69**

J. P. Morgan Chase & Company

**Patrick Carney, '70**

Chairman and Chief Executive Officer

Claremont Companies

**The Honorable Darcel D. Clark, '83**

Judge of the Criminal Court

City of New York

**\*John M. Connors Jr., '63**

Chairman

Hill, Holliday, Connors, Cosmopolos, Inc.

**\*Kathleen A. Corbet, '82**

Executive Vice President

Alliance Capital Management Corporation

**\*Joseph E. Corcoran, '59**

Chairman

Corcoran Jennison Companies

**Robert F. Cotter, '73**

Chief Operating Officer

Starwood Hotels & Resorts Worldwide, Inc.

**Robert M. Devlin**

Chairman

Curragh Capital Partners

**Francis A. Doyle, '70, MBA '75**

## Trustee Associate Membership 2003-2004

**Mary Jane Vouté Arrigoni**  
Greenwich, CT

**Casey C. Beaumier, S.J.**  
Weston Jesuit School of Theology

**Wayne A. Budd, Esq., '63**  
Executive Vice President and General Counsel  
John Hancock Financial Services, Inc.

**Denis H. Carroll, '64**  
Chairman and Chief Executive Officer  
CRL Industries, Inc.

**James F. Cleary, '50, D.B.A. '93 (Hon.)**  
Advisory Director  
UBS

**Charles I. Clough Jr., '64**  
Chairman and Chief Executive Officer  
Clough Capital Partners

**Christopher S. Collins, S.J.**  
Weston Jesuit School of Theology

**John M. Corcoran, '48**  
Partner  
John M. Corcoran & Company

**John F. Cunningham, '64**  
Chairman and Chief Executive Officer  
Cunningham and Company

**Brian E. Daley, S.J.**  
Professor, Department of Theology  
University of Notre Dame

**Michael A. Fahey, S.J., '57, L.Th. '65**  
Professor, Department of Theology  
Marquette University

**Emilia M. Fanjul**  
Boston College Parent

**John F. Farrell Jr.**  
Chairman  
Automatic Service Company

**Yen-Tsai Feng**  
Roy E. Larsen Librarian (Ret.)  
Harvard College

**Charles D. Ferris, Esq., '54, J.D. '61, LL.D '78 (Hon.)**  
Senior Partner  
Mintz, Levin, Cohn, Ferris, Glovsky & Popeo, P.C.

**Thomas J. Flanagan, '42**  
Chairman, President & Chief Executive Officer  
The Flanagan Group-Technology Consulting

**Thomas J. Flatley**  
President  
The Flatley Company

**Thomas J. Galligan Jr., '41, D.B.A. '75 (Hon.)**  
Chairman and Chief Executive Officer (Ret.)  
Boston Edison Company

**John J. Higgins, S.J., '59, M.A. '60, 'ST.L. '67**  
Rector of the Jesuit Community  
Fairfield University

**Richard T. Horan, '53**  
President  
Hughes Oil Company

**George W. Hunt, S.J.**  
Director, Archbishop Hughes Institute  
Fordham University

**Richard A. Jalkut, '66**  
President and Chief Executive Officer  
TelePacific Communications

**Anne P. Jones, Esq., '58, J.D. '61**  
Consultant

**Michael D. Jones, Esq., '72, J.D. '76**  
Senior Executive Vice President and Chief Administrative Officer  
National Association of Securities Dealers, Inc.

**Mark A. Kramer, S.J.**  
Weston Jesuit School of Theology

**Judith B. Krauss, '68**  
Professor of Nursing & Master, Silliman College  
Yale University

**Francis C. Mackin, S.J., '53**  
Pastoral Ministry  
Boston College

**John J. McMullen**  
(Retired)  
McMullen Consultants, Inc.

**Catherine T. McNamee, C.S.J., M.Ed '55, M.A. '58**  
Profesora  
Universidad Catolica del Maule

**John A. McNeice Jr., '54, DBA '97 (Hon.)**  
Chairman and Chief Executive Officer (Ret.)  
The Colonial Group, Inc.

**Robert A. Mitchell, S.J.**  
Superior  
America House

**Giles E. Mosher Jr., '55**  
Vice Chairman (Emeritus)  
FleetBoston

**Robert J. Murray, '62**  
Chairman and Chief Executive Officer  
New England Business Service, Inc.

**Kevin F. O'Brien, S.J.**  
Weston Jesuit School of Theology

**Thomas D. O'Malley**  
Chairman  
Premcor, Inc.

**Cornelius W. Owens, '36, LL.D. '68 (Hon.)**  
Executive Vice President (Ret.)  
AT&T

**Nicholas S. Rashford, S.J.**  
President  
St. Joseph's University

**Thomas J. Rattigan, '60**

**E. Paul Robsham, M.Ed. '83**  
Boston College Alumnus

**Thomas F. Ryan Jr., '63**  
Private Investor (Ret.)

**John J. Shea, S.J., M.Ed. '70**  
Vice President for University Ministries  
University of Scranton

**Sylvia Q. Simmons, M.Ed. '62, Ph.D. '90**  
President (Ret.)  
American Student Assistance Corporation

**Robert L. Sullivan, '50, M.A. '52**  
International Practice Director (Ret.)  
Peat, Marwick, Mitchell & Company

## Trustee Associate Membership 2003-2004 (Continued)

### **John S. Thiede, S.J.**

Instructor of Theology  
Creighton University

### **Sandra J. Thomson, M.D., '58 (Newton College)**

Orthopedic Surgeon

### **Salvatore J. Trani**

President and Chief Executive Officer  
Garban Corporates, LLC

### **Thomas A. Vanderslice, Ph.D., '53**

Private Investor

### **Vincent A. Wasik**

President  
MCG Global, LLC

### **Benaree P. Wiley**

President and Chief Executive Officer  
The Partnership, Inc.

### **Blenda J. Wilson, Ph.D., '79**

President and Chief Executive Officer  
Nellie Mae Education Foundation

†Only Boston College degrees listed  
Source: President's Office

## Board of Trustee Chairmen

<b>Cornelius W. Owens</b>	1972-1975
<b>Thomas J. Galligan, Jr.</b>	1975-1978
<b>James P. O'Neill</b>	1978-1981
<b>William F. Connell</b>	1981-1984
<b>David S. Nelson</b>	1984-1987
<b>Thomas A. Vanderslice</b>	1987-1990
<b>John M. Connors, Jr.</b>	1990-1993
<b>Geoffrey T. Boisi</b>	1993-1996
<b>Richard F. Syron</b>	1996-1999
<b>Charles I. Clough, Jr.</b>	1999-2002
<b>John M. Connors, Jr.</b>	2002-

## The Jesuit Community at Boston College

With nearly 110 members, the Jesuit Community at Boston College is one of the larger communities in the Society of Jesus. Forty-five Jesuits work full-time at Boston College, thirty on different faculties and fifteen in administrative positions. Eleven members of the community, though nominally retired, continue to teach and work in administrative posts on a part-time basis. A number of Jesuits in the community also offer Ignatian retreats and spiritual direction to faculty, staff, and students. Also part of the community are some 21 Jesuits from 16 different

countries who are studying for graduate degrees at the University and several visiting scholars from other institutions. The main community residence is St. Mary's Hall, but there are also four smaller communities around the perimeter of the campus. Six Jesuits live in the residence halls. The Jesuits who staff St. Ignatius Parish are also a part of the Boston College Jesuit Community. For further details, including a list of courses taught by Jesuits at Boston College, see the Jesuit Community Web page at <http://fnwww.bc.edu/SJ>  
Source: Rector, Jesuit Community

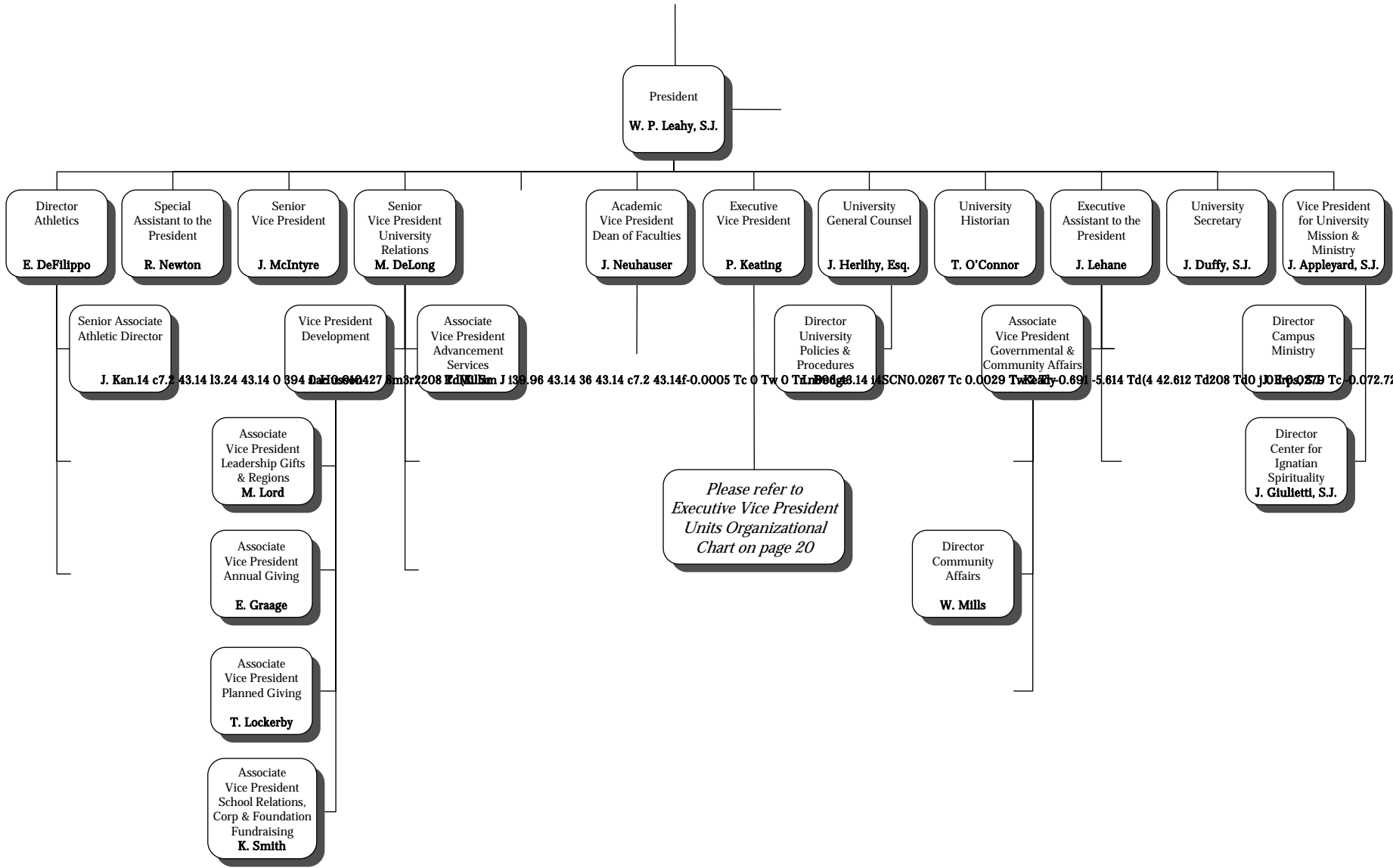
---

Officers of the University  
2003-2004

Academic Administration  
2003-2004

---

**President**  
William P. Leahy, S.J.





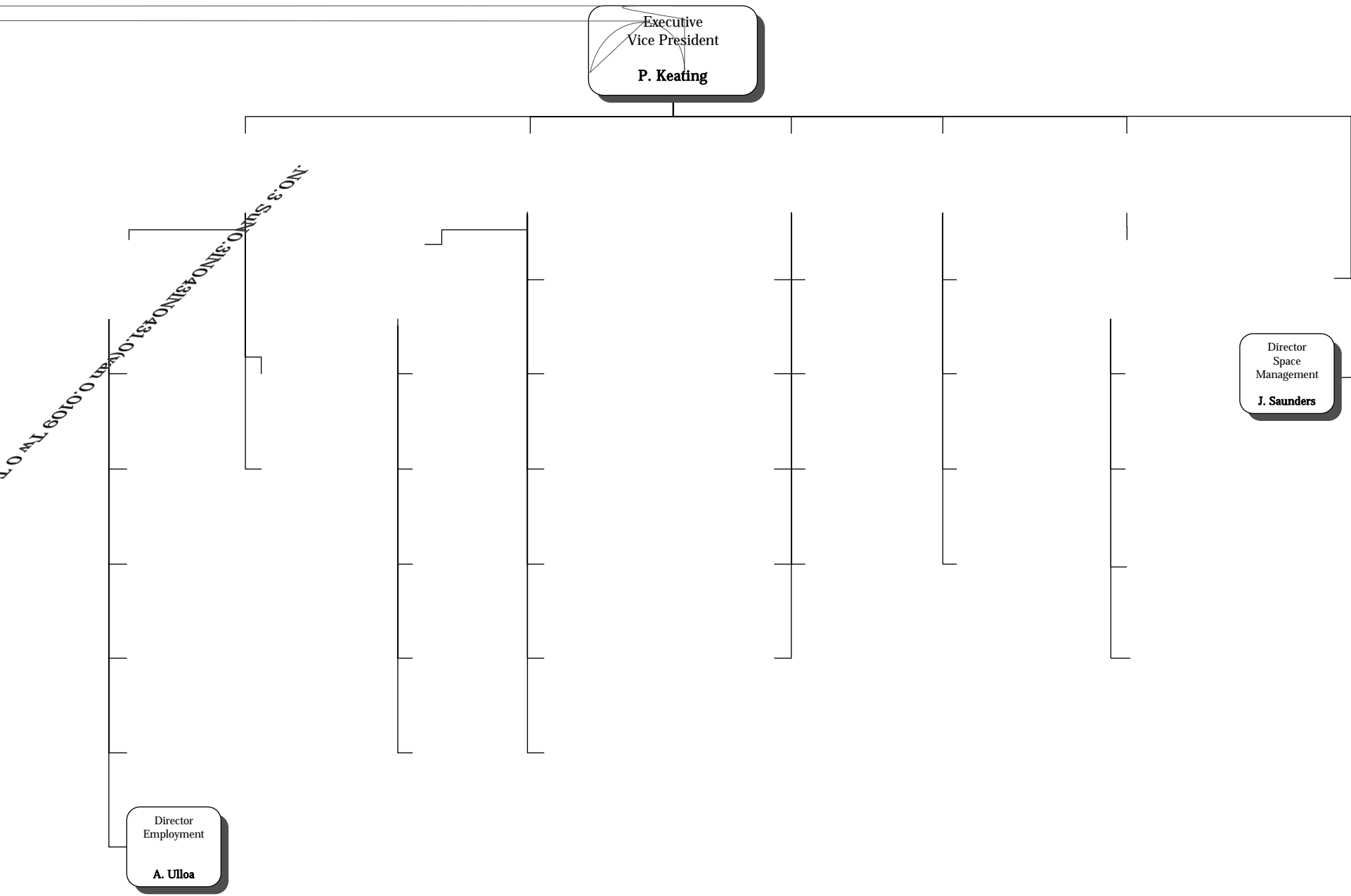


Executive  
Vice President  
**P. Keating**

Director  
Space  
Management  
**J. Saunders**

Director  
Employment  
**A. Ulloa**

NO. 3. SINO. 31NO. 431. 010. 0. 0109 TW. 0. T.



---

## University Administrators 2003-2004

---

**Academic Development Center**

Suzanne M. Barrett, Director

**Academic & Research Services**

Ted Gaiser, Director

**Undergraduate Admission**

John L. Mahoney, Jr., Director

---

## University Administrators 2003-2004 (Continued)

---

**Learning to Learn**

Dan Bunch, Director

**Learning Resources for Student Athletes**

Ferna L. Phillips, Director

**Office of Marketing Communications**

Ben Birnbaum, Executive Director  
and Special Assistant to the President

**McMullen Museum of Art**

Nancy D. Netzer, Director

**Media Technology Services**

Yoshio Saito, Director

**Boston College Neighborhood Center**

Maria S. DiChiappari, Director

**Center for Nursing Research**

Mary E. Duffy, Director

**Boston College Police**

Robert A. Morse, Chief

**University Policies & Procedures**

Ivy Dodge, Director

**Public Affairs**

John B. Dunn, Director

**Purchasing**

John D. Beckwith, Director

**Institute of Religious Education and Pastoral Ministry**

Thomas Groome, Director

**Residential Life**

Henry J. Humphreys, Director

**Center for Retirement Research**



Faculty by School and Rank\*  
2002-2003

School	No.	%	No.	%	No.	%	No.	%	No.	%	Faculty on leave**
Arts & Sciences	148	38%	149	38%	83	21%	11	3%	391	100%	30
Education	22	41%	17	31%	15	28%	0	0%	54	100%	2
Law	22	48%	18	39%	6	13%	0	0%	46	100%	8
Management	26	30%	34	37%	27	31%	0	0%	87	100%	3
Nursing	8	18%	19	56%	8	18%	9	20%	44	100%	0
Social Work	4	24%	8	47%	4	24%	1	6%	17	100%	1
<b>Total</b>	<b>230</b>	<b>36%</b>	<b>245</b>	<b>38%</b>	<b>143</b>	<b>23%</b>	<b>21</b>	<b>6%</b>	<b>2401.386%</b>	<b>3728.922401.0%</b>	<b>11-47.5785.28%7.21(82 TrTrTrF2003)</b>

## Faculty by Highest Degree Earned and Rank 2002-2003

Degree	Professor		Associate		Assistant		Instructor		Total	
	No.	%	No.	%	No.	%	No.	%	No.	%
Doctorate	212	100%	274	98%	121	96%	4	17%	611	96%
Master's	0	0%	3	2%	5	4%	20	83%	28	4%
<b>Total</b>	<b>212</b>	<b>100%</b>	<b>277</b>	<b>100%</b>	<b>126</b>	<b>100%</b>	<b>24</b>	<b>100%</b>	<b>639</b>	<b>100%</b>

Source: Office of the Academic Vice President

**96% of Boston College  
faculty members  
hold a doctoral degree**

## Faculty by Highest Degree Earned and Gender 2002-2003

Degree	Women		Men		Total	
	No.	%	No.	%	No.	%
Doctorate	228	95%	383	96%	611	96%
Master's	12	5%	16	4%	28	4%
<b>Total</b>	<b>240</b>	<b>100%</b>	<b>399</b>	<b>100%</b>	<b>639</b>	<b>100%</b>

Source: Office of the Academic Vice President

## Faculty by Rank and Gender 2002-2003

Rank	Women		Men		Total	
	No.	%	No.	%	No.	%
Professor	62	26%	165	41%	227	36%
Associate	87	36%	150	38%	237	37%
Assistant	67	28%	74	19%	141	22%
Instructor	24	10%	10	3%	34	5%
<b>Total</b>	<b>240</b>	<b>100%</b>	<b>399</b>	<b>100%</b>	<b>639</b>	<b>100%</b>

Source: Office of the Academic Vice President

Full-Time Equivalent Faculty, Teaching Fellows, and  
By School, 2002-2003

School	FTE of Full-Time Faculty		FTE of Part-Time Faculty		Total	%
	No.	%	No.	%		
Arts & Sc	106.50	56%	88.83	16%	195.33	20%
Education	27.33	14%	106.00	11%	133.33	14%
Management	17.00	9%	50.00	5%	67.00	7%
Nursing	4.75	3%	57.50	6%	62.25	7%
Law	9.00	5%	42.50	4%	51.50	5%
Social W	24.50	13%		0%	24.50	3%
<b>Total</b>	<b>189.08</b>	<b>100%</b>	<b>949.28</b>	<b>100%</b>	<b>1138.36</b>	<b>100%</b>

Source: Office of

Full-Time Faculty, Teaching Fellows, and Teaching Assistants  
By School and Department, 2002-2003

Full-Time Faculty: 189.08 (16%), Teaching Fellows: 106.00 (9%), Teaching Assistants: 949.28 (81%)

-8

-8

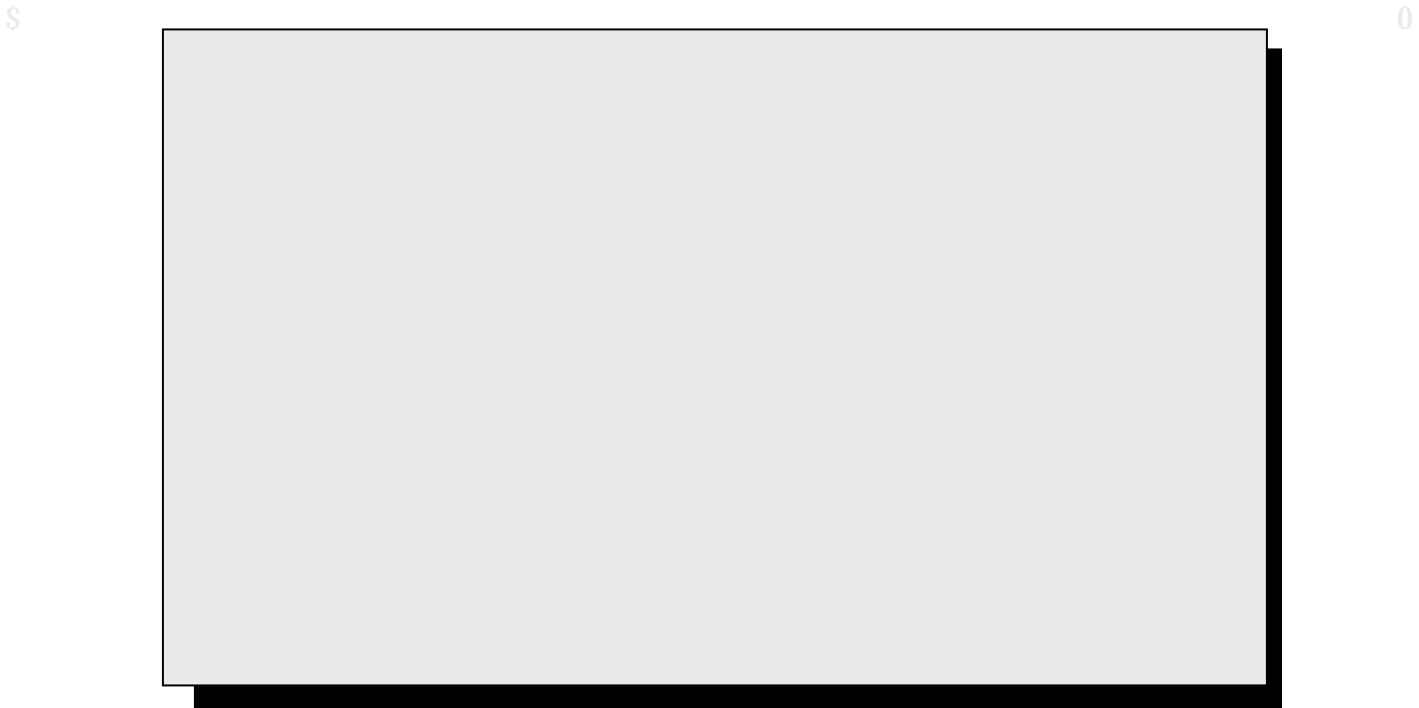
**Faculty Compensation\*  
Average by Rank**

<b>Year</b>	<b>Professor</b>	<b>Associate</b>	<b>Assistant</b>
1993-94	\$96,400	\$71,700	\$60,400
1994-95	102,300	75,200	66,400
1995-96	106,700	78,500	69,800
1996-97	111,100	80,700	69,000
1997-98	115,900	83,400	71,400
1998-99	120,000	85,800	71,300
1999-00	122,387	88,815	73,542
2000-01	131,800	92,700	71,300
2001-02	136,600	96,300	75,800
2002-03	145,170	100,228	81,313



\*Includes salary and fringe benefits.  
Source: Office of the Academic Vice President

**Faculty Compensation by Rank\*  
Boston College Average Compared to AAUP Category I (9-Month Equivalent), 2002-2003**





### Full-Time Freshman Enrollment By Year and Gender

Fall	Men	Women	Total
1994	1,083	1,167	2,250
1995	1,003	1,137	2,140
1996	1,145	1,329	2,474
1997	1,084	1,084	2,168
1998	1,063	1,184	2,247
1999	1,103	1,181	2,284
2000	1,114	1,132	2,246
2001	940	1,163	2,103
2002	1,150	1,165	2,315
2003	1,055	1,153	2,208

Source: Office of Undergraduate Admissions

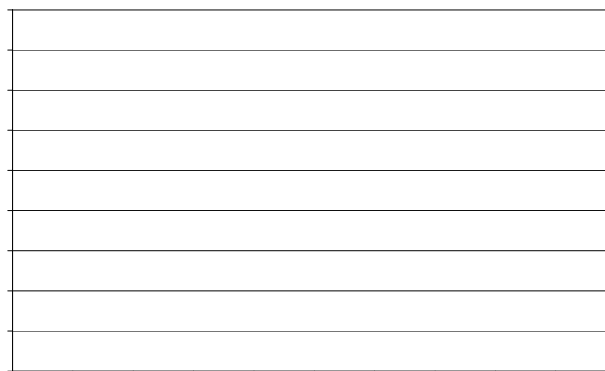
### Freshman Admission Profile Middle 50% Range of SAT Scores

Class	Verbal	Math	Combined
1998	520 - 610	600 - 690	1140 - 1280
1999	520 - 620	610 - 700	1140 - 1300
2000*	580 - 670	600 - 690	1200 - 1340
2001	580 - 680	610 - 690	1210 - 1340
2002	590 - 680	610 - 690	1210 - 1350
2003	590 - 680	610 - 690	1210 - 1360
2004	600 - 690	620 - 700	1230 - 1370
2005	600 - 690	620 - 700	1240 - 1380
2006	600 - 690	620 - 710	1250 - 1390
2007	600 - 690	630 - 710	1260 - 1390

\*Class of 2000 begins College Board recentered score series.

Source: Office of Undergraduate Admissions

### Freshman Application, Acceptances, and Enrollment By Year and Gender



- Acceptances as a % of Applications
- Enrollment as a % of Acceptances
- ▲ Enrollment as a % of Applications

Fall	Applications	Acceptances	Acceptances as a % of Applications	Total Enrollment	Enrollment as a % of Acceptances	Enrollment as a % of Applications
1994	15,522	6,378	41	2,250	35	14
1995	16,680	6,399	38	2,140	33	13
1996	16,501	6,750	41	2,474	37	15
1997	16,455	6,455	39	2,168	34	13
1998	16,373	6,484	40	2,247	35	14
1999	19,746	6,976	35	2,284	33	12
2000	20,743	6,587	32	2,246	34	11
2001	19,059	6,401	34	2,103	33	11
2002	21,133	6,850	32	2,315	34	11
2003	22,424	6,896	31	2,208	32	10

Note: Freshman enrollment reported above is based on deposits received from students accepting the offer of admission on or before the deadline set by the Committee on Admissions. Withdrawals may occur during the summer months and the first two weeks in September.

Source: Office of Undergraduate Admissions 31%



## Top Cross Application Competitor Schools of Enrolling Freshmen Class of 2006

### Top 12 Colleges and Universities

Georgetown University	University of Pennsylvania	University of Notre Dame
Harvard College	Brown University	Duke University
Tufts University	Villanova University	New York University
Boston University	Cornell University	Yale University

Note: Competitor schools are determined by the number of admitted students applying to the listed colleges. They do not include competitor schools of students who were not admitted to Boston College. Source: Office of Enrollment Management Research, 2002 Admitted Student Questionnaire Plus (2,609 student responses). Cross Application Competitor Schools are determined every two years.

## Undergraduate Transfer Student Applications, Acceptances, and Enrollment Full-Time

Fall*	Applications	Acceptances	Acceptances as a % of Applications	Total Enrollment	Enrollment as a % of Acceptances	Enrollment as a % of Applications
1994	1,704	507	30	222	44	13
1995	1,740	422	24	216	51	12
1996	1,526	252	17	113	45	7
1997	1,338	495	37	247	50	19
1998	1,339	496	35	225	48	17
1999	1,525	447	29	248	55	16
2000	1,363	256	19	142	56	10
2001	1,015	258	25	132	51	13
2002	1,079	130	12	71	55	7
2003	1,123	260	23	124	48	11

\* Transfer enrollment typically increases 75-125 students second semester.

Source: Office of Undergraduate Admissions

## Undergraduate Transfer Student Enrollment By Type of Previous Institution and Gender

Fall*	2-Year Public	2-year Private	4-Year Public	4-Year Private	Total	Men	Women	Total
1994	44	8	50	120	222	88	134	222
1995	31	6	58	121	216	91	125	216
1996	11	1	43	58	113	42	71	113
1997	22	5	66	154	247	112	135	247
1998	17	8	62	138	225	100	125	225
1999	24	4	59	161	248	95	153	248
2000	10	-	61	71	142	63	79	142
2001	9	2	45	76	132	59	73	132
2002	3	1	24	43	71	32	39	71
2003	13	0	34	77	124	55	69	124

\* Transfer enrollment typically increases 75-125 students second semester.

Source: Office of Undergraduate Admissions



---

Undergraduate, Graduate & Professional Enrollment, Fall 1999 to Fall 2003  
By School, Gender, and Full- and Part-Time

---

	A&S	Mgt.	Ed.	Nurs.	Total	Adv.St.	GA&S	GEd.	GNurs.	GMgt.	GSSW	Law	Adv.St.	Total	Univ. Total
<b>Fall 1999</b>															
Full-Time	5,853	2,271	828	236	9,189	241	322	469	95	219	346	829	13	2,293	<b>11,722</b>
Part-Time	-	-	-	2	2	595	678	587	66	708	138	-	193	2,370	<b>2,967</b>
Men	2,823	1,386	123	7	4,339	411	525	264	9	622	71	404	77	1,972	<b>6,722</b>



## Graduate Enrollment





## Undergraduate Majors by School

	1994	1995	1996	1997	1998	1999	2000	2001	2002	2003
<b>Arts &amp; Sciences</b>										
Art History	43	38	37	38	36	34	32	45	42	41
Biochemistry	108	111	115	117	97	84	83	82	95	494
Biology	671	752	734	665	543	539	481	443	465	118
Chemistry	90	100	89	84	90	94	84	89	102	98
Classics	20	20	20	24	19	15	11	21	17	26
Communication	533	522	499	542	624	734	865	945	963	925
Computer Science	82	97	118	133	181	202	200	189	139	108
Economics	345	356	364	404	430	402	382	374	398	417
English	925	927	935	931	868	906	863	845	770	758
Film Studies	-	-	-	-	-	-	10	32	46	45
French	54	50	43	39	45	50	56	47	49	46
Geology/Geophysics	87	82	80	736	66	58	52	42	30	29
German	13	9	6	148	8	11	10	3	7	12
History	398	411	379	392	410	431	451	465	530	560
Independent	12	4	2	1	3	2	5	3	1	-
International Studies	-	-	40	67	64	56	45	31	32	35
Italian	5	4	5	7	6	4	5	3	5	2
Mathematics	178	176	190	168	123	148	135	134	194	200
Music	26	21	19	23	26	23	22	29	32	9

**International Students & Scholars  
By School, 2003-2004\***

---

**International Students & Scholars  
By Class or Program, 2003-2004\***

## International Students by Country Undergraduate and Graduate, 2003-2004

	Under-graduate	Graduate/ Professional	Total		Under-graduate	Graduate/ Professional	Total	
Algeria	-	1	1	Korea South	30	24	54	
Argentina	1	4	5	Kuwait	-	3	3	
Armenia	-	3	3	Laos	-	1	1	
Australia	8	8	16	Latvia	-	1	1	
Azerbaijan	1	-	1	Lebanon	-	2	2	
Bahamas	1	-	1	Liberia	1	-	1	
Bangladesh	-	1	1	Malawi	-	1	1	
Belarus	-	1	1	Malaysia	1	-	1	
Bermuda	-	1	1	Mexico	-	5	5	
Bolivia	1	-	1	Moldova	-	1	1	
Brazil	7	4	11	Mongolia	-	1	1	
Bulgaria	2	9	11	Morocco	-	2	2	
Canada	16	42	58	Nepal	-	5	5	
Cayman Islands	1	-	1	Netherlands	11	1	12	
Chile	2	5	7	Nigeria	-	3	3	
China	3	128	131	Norway	2	-	2	
Colombia	1	4	5	Pakistan	1	-	1	
Costa Rica	-	1	1	Panama	2	1	3	
Czech Republic	-	3	3	Paraguay	1	-	1	
Be7TwRus500(1-46.7(131		)56w{71		)560JT*u	)-2893.3(.62520(		)6120	-(1



## Undergraduate Degrees Conferred\*

### By Degree and Number of Majors

	1998-99	1999-00	2000-01	2001-02	2002-03
<b>Arts &amp; Sciences</b>					
<b>A.B.</b>					
Single Major	832	971	1061	1032	1117
Double Major	179	237	184	192	220
Triple Major	-	1	1	4	1
Total A.B. Degrees	1,011	1,209	1,246	1,228	1,338
<b>B.S.</b>					
Single Major	167	149	149	142	125
Double Major	11	22	11	15	9
Triple Major	-	-	-	-	-
Total B.S. Degrees	178	171	160	157	134
Total Arts & Sciences	1,189	1,380	1,406	1,385	1,472
<b>School of Education - A.B.</b>					
Single Major	56	39	55	41	40
Double Major	140	181	149	157	144
Triple Major	-	2	-	-	-
Total Lynch School of Education	196	222	204	198	184
<b>School of Management - B.S.</b>					
Single Major	358	430	374	346	312
Double Major	219	220	201	221	205
Triple Major	7	7	7	-	9
Total Carroll School of Management	584	657	582	567	526
<b>School of Nursing</b>					
Single Major	62	60	47	63	42
Double Major	-	-	-	1	1
Triple Major	-	-	-	-	-
Total Connell School of Nursing	62	60	47	64	43
Subtotal-Undergraduate Day Degrees Conferred	2,031	2,319	2,239	2,214	2,225
<b>Advancing Studies - A.B.</b>					
Single Major	110	97	97	97	86
Double Major	-	-	-	-	2
Triple Major	-	-	-	-	-
Total College of Advancing Studies	110	97	97	97	88
<b>Total Undergraduate Degrees Conferred</b>	<b>2,141</b>	<b>2,416</b>	<b>2,336</b>	<b>2,311</b>	<b>2,313</b>

\*August, December, and May graduations combined.  
Source: Office of Student Services

## Undergraduate Degrees Conferred By Major\*

	1998-99	1999-00	2000-01	2001-02	2002-03
Accounting	149	103	77	66	89
Accounting/Informational Technology	-	-	-	-	1
Art History	15	14	7	10	14
Biochemistry	36	25	15	21	15
Biology	119	96	109	88	81
Chemistry	17	24	18	18	23
Child in Society	2	4	4	5	-
Classics	3	4	1	4	3
Communication	141	180	215	227	240
Computer Science	32	60	54	58	57
Early Childhood Education	21	12	11	13	12
Economics	109	170	133	147	143
Elementary Education	43	49	47	64	58
Elementary Education & Moderate Special Needs	30	42	30	7	7
English	209	203	215	211	232
Environmental Geosciences	16	9	10	19	8
Film Studies	-	-	1	7	4
Finance	212	259	257	208	206
French	10	11	8	11	7
Geology	7	6	-	-	-



---

Graduate Degrees Conferred, 2002-2003\*  
By School, Degree, Primary Field, and Gender

---

	Men	Women	Total	Men	Women	Total	Men	Women	Total
<b>Graduate School of Arts &amp; Sciences</b>									
<b>Humanities</b>									
American Studies	-	-	-	-	-	-	-	-	-
Classics	-	-	-	-	-	-	-	-	-
English	1	3	4	10	25	35	11	28	39
History	6	4	10	11	3	14	17	7	24



## Undergraduate and Graduate Financial Aid, 1998-2003

### Dollars Awarded (Dollars in Thousands)

	1998-99	1999-00	2000-01	2001-02	2002-03
<b>Type of Aid - Undergraduate</b>					
University Scholarships and Grants <sup>1</sup>	\$48,714	\$52,312	\$54,291	\$58,671	\$60,933
State Scholarships <sup>2</sup>	1,643	1,761	2,052	2,136	1,850
Pell Grants <sup>3</sup>	2,227	2,251	2,286	2,586	2,695
Supplemental Educational Opportunity Grants	1,555	1,848	1,558	1,622	1,455
Work-Study	1,785	1,664	1,790	1,831	1,851
Perkins Loans <sup>4</sup>	2,852	3,080	2,556	2,904	2,440
<b>Undergraduate Total</b>	<b>\$58,776</b>	<b>\$62,916</b>	<b>\$64,533</b>	<b>\$69,750</b>	<b>\$71,224</b>
<b>Type of Aid - Graduate</b>					
Work-Study	682	673	696	765	850
Perkins Loans <sup>4</sup>	1,811	2,332	2,519	3,352	3,586
<b>Total Undergraduate and Graduate</b>	<b>\$61,269</b>	<b>\$65,921</b>	<b>\$67,748</b>	<b>\$73,867</b>	<b>\$75,660</b>

## Undergraduate and Graduate Financial Aid, 1998-2003

### Number of Awards

	1998-99	1999-00	2000-01	2001-02	2002-03
--	---------	---------	---------	---------	---------

## Undergraduates Studying Abroad

	Fall Semester			Spring Semester			Annual Average		
	University Programs	External Programs	Total All Programs	University Programs	External Programs	Total All Programs	University Programs	External Programs	Total All Programs
1998-1999	156	41	197	276	115	391	216	78	294
1999-2000	196	35	231	348	127	475	272	81	353
2000-2001	230	50	280	347	144	491	289	97	386
2001-2002	239	50	289	224	125	349	277	96	372
2002-2003	255	43	298	222	96	318	279	73	352

Source: Office of Student Services

## Undergraduate Student Graduation and Retention Rates Freshman Matriculants in Fall 1996

Rating at Time of Admission	Number of Fall Matriculants	Transfers Out in Good Standing		Within Twelve Semesters Graduates		Retention Rate*
		Number	Percent	Number	Percent	
Top 5%	147	6	4%	131	89%	93%
Next 20%	798	52	7%	697	87%	94%
Remaining 75%	1,307	55	4%	1,141	87%	92%
<b>Total</b>	<b>2,252</b>	<b>113</b>	<b>5%</b>	<b>1,969</b>	<b>87%</b>	<b>92%</b>

\* "Retention Rate" is the "graduation rate" plus the "transfer out rate" of students to another college.

Source: Office of Enrollment Management Research: March 1, 2003

## Alumni Association National Board of Directors 2003-2004

John J. Griffin, Jr. '65  
**President**

Christopher M. Doran '68  
**Vice President/President-Elect**

Susan Power Gallagher NC '69  
**Treasurer**

Kathleen Donovan Goudie '56  
**Secretary**

Charles J. Heffernan, Jr. '66  
**Past President**

John E. Joyce '61, MBA '70  
**Chair, Council of Past Presidents;  
Co-Chair, Physical Facilities**

Sarah Ford Baine NC '69  
**Director, Newton College**

Ann M. Bersani '77  
**Director, West of the Mississippi**

Margaret Mary Connolly, J.D. '70  
**Director, Law School**

Roger T. Connor '52  
**Director, Graduated More Than  
Ten Years**

William J. Cunningham '57  
**Development Liaison**

William J. Dorcena '95  
**Director, Graduated Less Than  
Ten Years**

Thomas F. Flannery '81  
**Chair-Elect, Nominating Committee**

Brian Kickham '79  
**Chair, Nominating Committee**

Patrick M. Lawler '93  
**Director, Graduated Less Than  
Ten Years**

Judith Lyons '98  
**Director, Woods College of  
Advancing Studies**

Julie Finora McAfee '93  
**Director, West of the Mississippi**

J. Emmett McCarthy '64  
**Director, Graduated More Than  
Ten Years**

Floyd B. McCrory '77  
**Director, East of the Mississippi**

Dawn E. McNair '82, M.Ed. '83  
**Director, Graduated More Than  
Ten Years**

Mary Pasciucco NC '75  
**Director, Newton College**

Kenneth D. Pierce '79  
**Director, East John J. Michalczyk 66, M.A. 67  
Commerce**

James A. Champy, J.D. '68  
**Education**

Blenda J. Wilson, Ph.D. '79  
**Health**

Constance T. Donovan '64

**Law**

Robert J. Muldoon, Jr. '60,  
M.A. '61, LL.B. '65

**Public Service**

Victor F. Ciardello, Jr. '65  
ske0.0011 Tc0.0022 Tw(Yo)3.9(u(e)-0.07TJ.Ed-1.0m

**Religion**

Archbishop Timothy P.A. Broglio '83

**Science**

Paul J. Hesketh '74

**Young Alumni Achievement Award**  
Omari L. Walker

## Alumni Geographic Distribution Fall 2003

## Summary

Alabama	142	Nevada	177
Alaska	99	New Hampshire	3,603
Arizona	682	New Jersey	5,714
Arkansas	54	New Mexico	228
California*	6,490	New York*	11,475
Colorado	955	North Carolina	1,073
Connecticut	7,185	North Dakota	18
Delaware	224	Ohio	1,359
District Of Columbia*	924	Oklahoma	93
Florida	4,120	Oregon	382
Georgia	1,141	Pennsylvania	3,033
Guam	22	Puerto Rico	414
Hawaii	297	Rhode Island	2,835
Idaho	69	South Carolina	326
Illinois	2,245	South Dakota	29
Indiana	319	Tennessee	255
Iowa	132	Texas	1,524
Kansas	166	Utah	130
Kentucky	198	Vermont	755
Louisiana	262	Virgin Islands	40
Maine	1,981	Virginia	2,716
Maryland	2,534	Washington	872
Massachusetts	63,568	West Virginia	70
Michigan	811	Wisconsin	506
Minnesota	629	Wyoming	41
Mississippi	42	<b>Total U.S.</b>	<b>133,671</b>
Missouri	502	Foreign Nations	3,003
Montana	80	Unknown	1,312
Nebraska	130	<b>Total Alumni</b>	<b>137,986</b>

\*California, New York, and Washington, D.C. include APO addresses  
Data as of September 2003  
Source: Information Servic

Living Alumni  
By Primary School and Class, Fall 2003

---

\*Adv Newton Grad. Grad. \*\*Grad \*\*Grad Grad Social Weston Hon. \*\*\*EX

## Living Alumni By Primary School and Class, Fall 2003 (Continued)

Class	A&S	Ed.	Mgt.	Nursing	*Adv	Newton	Grad.	Grad.	**Grad	**Grad	Grad	Social	Weston		Hon.	***EX	Total
					Stds	College	A&S	Mgt.	Ed.	Nurs.	AdvStds	Work	Law	Theo.	Deg.	Alum.	
1966	425	173	328	198	60	154	234	34	-	-	-	47	107	34	5	38	1,837
1967	446	188	363	174	68	143	388	47	-	-	-	52	89	27	2	42	2,029
1968	531	273	404	137	54	183	345	46	-	-	-	47	110	27	4	42	2,203
1969	521	235	392	114	77	183	476	34	1	1	-	46	133	32	2	53	2,300
1970	516	225	344	142	82	203	454	97	-	1	-	55	108	1	5	40	2,273

## Living Alumni By Gender and Class, Fall 2003

Class	Women	Men	Total	Class	Women	Men	Total
1920	-	1	1	1962	501	794	1,295
1921	-	0	0	1963	613	1,060	1,673
1922	-	0	0	1964	629	1,102	1,731
1923	-	2	2	1965	578	1,155	1,733
1924	-	0	0	1966	693	1,144	1,837
1925	-	1	1	1967	745	1,284	2,029
1926	-	4	4	1968	794	1,409	2,203
1927	3	6	9	1969	860	1,440	2,300
1928	-	8	8	1970	930	1,343	2,273
1929	1	9	10	1971	972	1,415	2,387
1930	4	13	17	1972	1,083	1,562	2,645
1931	3	20	23	1973	1,072	1,402	2,474
1932	2	23	25	1974	1,342	1,520	2,862
1933	7	28	35	1975	1,559	1,334	2,893
1934	9	51	60	1976	1,657	1,561	3,218
1935	17	53	70	1977	1,529	1,269	2,798
1936	12	47	59	1978	1,535	1,464	2,999
1937	8	84	92	1979	1,648	1,341	2,989
1938	14	71	85	1980	1,692	1,350	3,042
1939	17	122	139	1981	1,748	1,386	3,134
1940	14	115	129	1982	1,857	1,349	3,206
1941	18	103	121	1983	1,939	1,240	3,179
1942	15	139	154	1984	1,813	1,327	3,140
1943	19	167	186	1985	1,823	1,230	3,053
1944	10	141	151	1986	1,863	1,304	3,167
1945	17	177	194	1987	1,935	1,241	3,176
1946	22	51	73	1988	1,880	1,325	3,205
1947	30	135	165	1989	1,955	1,336	3,291
1948	31	180	211	1990	1,900	1,407	3,307
1949	67	384	451	1991	1,960	1,446	3,406
1950	96	873	969	1992	2,103	1,677	3,780
1951	118	939	1,057	1993	2,026	1,448	3,474
1952	128	723	851	1994	1,933	1,530	3,463
1953	181	645	826	1995	1,999	1,505	3,504
1954	200	620	820	1996	1,933	1,617	3,550
1955	227	550	777	1997	1,964	1,596	3,560
1956	327	710	1,037	1998	2,047	1,561	3,608
1957	287	706	993	1999	1,888	1,474	3,362
1958	400	846	1,246	2000	2,096	1,638	3,734
1959	377	895	1,272	2001	1,919	1,556	3,475
1960	526	869	1,395	2002	1,898	1,556	3,454
1961	426	764	1,190	2003	1,917	1,552	3,469
				<b>Total</b>	<b>68,461</b>	<b>69,525</b>	<b>137,986</b>

Data as of September 2003

Source: Information Services, University Relations

## Gifts to the University\*

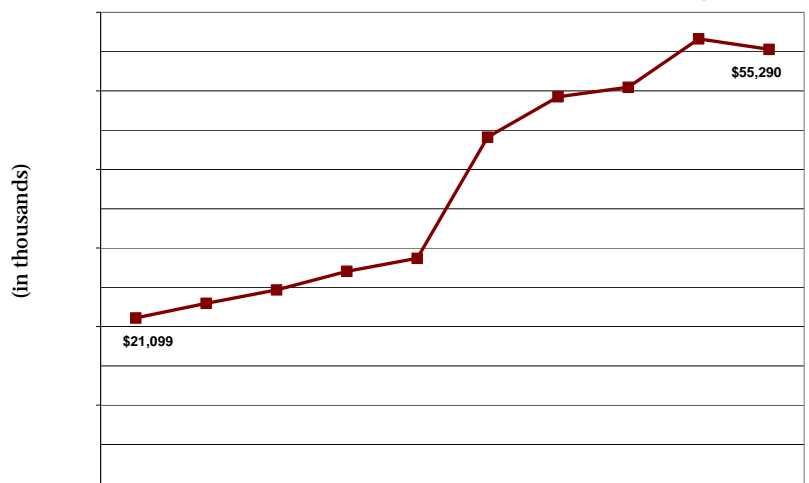
### Total Private Gift Support

Source	1998-99	1999-00	2000-01	2001-02	2002-03
Alumni	\$24,349,758	\$28,696,709	\$26,223,497	\$29,222,612	\$31,147,060
Parents	\$3,438,902	\$6,835,370	\$7,035,953	\$11,046,981	\$8,011,022
Friends	\$1,902,345	\$4,043,306	\$3,256,754	\$2,685,530	\$3,893,493
Corporations	\$5,924,441	\$3,739,139	\$4,985,249	\$4,805,765	\$5,808,748
Matching Gifts	\$1,259,289	\$1,595,223	\$1,576,392	\$1,657,407	\$1,583,587
Foundations	\$6,653,338	\$3,849,652	\$5,958,352	\$5,778,952	\$4,035,535
Associations	\$578,900	\$485,798	\$1,423,317	\$1,429,344	\$810,845
<b>Total Gifts</b>	<b>\$44,106,973</b>	<b>\$49,245,197</b>	<b>\$50,459,514</b>	<b>\$56,626,591</b>	<b>\$55,290,290</b>

\*Gifts represent cash received during the fiscal year which runs from June 1 to May 31. Data as of June, 2003  
Source: Information Services, University Relations.

### Total private Gift Support FY94 through FY03

In the past 10 years,  
gifts from Alumni  
have increased  
230%.



### Individual Donors\* By Giving Club

Giving Club	Level of Gift	1998-99	1999-00	2000-01	2001-02	2002-03
Gasson Society	\$10,000+	381	505	589	626	652
President's Circle	\$5,000-\$9,999	488	495	495	500	515
FIDES Patron	\$2,500-\$4,999	319	391	511	548	621
FIDES	\$1,000-\$2,499	2,036	2,159	2,454	2,408	2,344
Tower Builders	\$500-\$999	1,320	1,487	1,548	1,507	1,897
John Bapst Associates	\$250-\$499	2,005	2,683	3,302	3,086	3,071
McElroy Associates	\$100-\$249	7,326	7,231	8,285	8,361	8,961
Other Annual Fund	\$1-\$99	19,804	14,686	15,597	15,515	17,924
<b>Total Individual Donors</b>		<b>33,679</b>	<b>29,637</b>	<b>32,781</b>	<b>32,551</b>	<b>35,985</b>

\*Includes alumni, parents, and friends. Excludes corporations and foundations.

Note: Includes donors who qualify for Fides and President's Circle through the Young Fides and Matching Gift Programs.

Data as of June 2003

Source: Information Services, University Relations.



## Alumni Donors By Primary Schools and Class, 2002-2003

Class	A&S	Ed.	Mgt.	Nursing	Adv Stds.	Newton College	*Grad A&S	Grad Mgt.	*Grad Ed.	*Grad Nurs.	Grad AdvStds.	Social Work	Weston Law	Hon. Theo.	Degrees	**EX Alumni	Total
1924	1	-	-	-	-	-	-	-	-	-	-	-	-	-	-	-	1
1925	-	-	-	-	-	-	-	-	-	-	-	-	-	-	-	-	0
1926	-	-	-	-	-	-	-	-	-	-	-	-	-	-	-	-	0
1927	-	-	-	-	-	-	-	-	-	-	-	-	-	-	-	-	0
1928	1	-	-	-	-	-	-	-	-	-	-	-	-	-	-	-	1
1929	2	-	-	-	-	-	-	-	-	-	-	-	-	-	-	-	2
1930	3	-	-	-	-	-	-	-	-	-	-	-	-	-	-	-	3
1931	1	-	-	-	-	-	-	-	-	-	-	-	-	-	-	-	1
1932	3	-	-	-	-	-	-	-	-	-	-	-	-	-	-	1	4
1933	3	-	-	-	-	-	-	-	-	-	-	-	-	-	-	1	4
1934	10	-	-	-	1	-	-	-	-	-	-	-	-	-	-	2	13
1935	10	-	-	-	-	-	1	-	-	-	-	-	-	-	-	-	11
1936	14	-	-	-	-	-	-	-	-	-	-	-	-	-	-	-	14
1937	17	-	-	-	1	-	-	-	-	-	-	-	2	-	-	1	21
1938	17	-	-	-	-	-	-	-	-	-	-	1	1	-	-	1	20
1939	30	-	-	-	1	-	1	-	-	-	-	2	4	-	-	2	40
1940	42	-	-	-	-	-	-	-	-	-	-	2	1	-	-	3	48
1941	26	-	-	-	1	-	1	-	-	-	-	3	3	-	-	2	36
1942	35	-	5	-	2	-	-	-	-	-	-	3	1	-	-	2	48
1943	33	1	12	-	2	-	1	-	-	-	-	1	3	-	-	6	59
1944	31	-	14	-	-	-	-	-	-	-	-	1	-	-	-	5	51
1945	41	-	8	-	-	-	-	-	-	-	-	1	-	-	-	13	63
1946	2	-	-	-	-	-	1	-	-	-	-	-	1	-	-	3	7
1947	19	-	4	-	2	-	3	-	-	-	-	7	1	-	-	9	45
1948	34	-	17	-	3	-	2	-	-	-	-	9	5	-	-	-	70
1949	103	-	18	3	5	-	3	-	-	-	-	-	13	-	-	1	146
1950	189	-	74	6	1	8	11	-	-	-	-	5	14	-	-	5	313
1951	207	-	87	5	9	5	12	-	-	-	-	4	16	-	-	9	354
1952	132	-	83	16	5	5	5	-	-	-	-	4	20	-	-	5	275
1953	143	-	92	24	11	6	18	-	-	-	-	5	12	-	-	2	313
1954	94	-	66	26	12	7	26	-	-	-	-	7	14	-	-	6	258
1955	91	-	57	32	16	2	18	-	-	-	-	4	7	-	-	3	230
1956	92	48	65	31	15	6	14	-	-	-	-	8	11	1	-	13	304
1957	91	34	59	32	12	14	13	-	-	-	-	2	18	1	-	6	282
1958	83	44	87	43	9	15	22	-	-	-	-	6	17	-	1	8	335
1959	100	36	78	48	15	15	14	-	-	-	-	9	12	1	-	3	331
1960	97	43	91	60	22	25	29	-	-	-	-	9	16	1	-	2	395
1961	69	26	80	49	15	23	29	3	-	-	-	9	18	1	-	4	326
1962	75	33	61	44	11	21	14	4	-	-	-	8	26	-	-	9	306
1963	128	53	83	42	14	29	36	6	-	-	-	8	27	1	-	5	432
1964	141	54	100	43	12	43	30	5	-	-	-	15	20	1	-	5	469
1965	111	56	87	40	9	26	35	4	-	-	-	16	23	2	-	6	415
1966	143	48	85	62	17	29	53	13	-	-	-	11	31	2	-	1	495
1967	142	52	102	53	18	33	52	7	-	-	-	10	39	3	-	4	515
1968	169	86	96	34	12	45	61	14	-	-	-	12	31	1	1	4	566
1969	158	66	113	40	20	45	76	11	-	-	-	17	55	-	-	4	605

## Alumni Donors

## Buildings Related to Boston College Operations Location and Primary Use, Spring 2003

Name	Location	Primary Use	Date Constructed or Acquired	Gross Square Footage <sup>1</sup>
Alumni House.....	885 Centre St.....	Administrative.....	1974.....	15,638
Alumni Stadium .....	2604 Beacon St.....	Sports .....	1957.....	464,347
Bapst Library.....	Middle Campus .....	Library.....	1928.....	69,623
Barat House .....	885 Centre St.....	Jesuit Res & Admin.....	1974.....	25,392
Bea House <sup>2</sup> .....	176 Commonwealth Ave.....	Jesuit Residence.....	1965.....	4,685
Botolph House.....	18 Old Colony Rd .....	Administrative.....	1967.....	7,136
Bourneuf House.....	84 College Rd.....	Administrative.....	1985.....	4,460
Thea Bowman AHANA Center .....	72 College Rd.....	Administrative.....	1970.....	3,528
Brock House .....	78 College Rd.....	Administrative.....	1972.....	4,146

Name	Location	Primary Use	Date Constructed or Acquired	Gross Square Footage <sup>(1)</sup>
Mill Street Cottage	29 Mill St.	Residence	1974	2,879
Modular Apartments	Lower Campus	Student Residence	1970	101,492
Murray House	292 Hammond St	Commuter Center	1967	8,490
Murray Carriage House	292 Hammond St	Academic	1967	2,618
O'Connell House	185 Hammond St	Student Union	1938	32,007
Thomas P. O'Neill, Jr. Library	Middle Campus	Central Research Library	1984	206,910
Parking Garage	2599 Beacon St	General Parking Facility	1979	279,796
Parking Garage (New)	40 St. Thomas More Rd	General Parking Facility	1994	328,972
Quonset Hut	885 Centre St	Gymnasium	1974	5,964
Rahner House	96 College Rd	Administrative	1952	2,799
Roberts House & Garage <sup>3</sup>	246 Beacon St	Jesuit Residence	1989	8,583
Robsham Theater Arts Center	50 St Thomas More Rd	Student Services & Acad.	1981	31,614
Roncalli Hall	200 Hammond St	Student Residence	1965	40,674
Rubenstein Hall	90 Commonwealth Ave	Student Residence	1973	123,739
Service Building	Middle Campus	Academic & Administrative	1948	33,718
Shaw House	372 Beacon St	Student Residence	1962	9,494
Commander Shea Field	2605 Beacon St	Baseball/Soccer Field	1960	
Southwell Hall	38 Commonwealth Ave	Administrative	1937	12,338
St. Ignatius Maintenance Building	Middle Campus	Administrative	1993	2,372
St. Mary's Hall <sup>2</sup>	Middle Campus	Jesuit Residence	1917	135,721
St. Thomas More Hall	2150 Commonwealth Ave	Administrative	1955	64,584
Stuart House and the James W. Smith Wing	885 Centre St	Academic & Administrative	1974	104,884
Trinity Chapel (Newton)	885 Centre St	Chapel	1974	20,578
Vanderslice Hall	70 St. Thomas More Rd	Student Residence	1993	119,492
Vouté Hall	110 Commonwealth Ave	Student Residence	1988	87,189
Michael P. Walsh Hall	150 St. Thomas More Rd	Student Res. & Dining Facility	1980	205,805
Waul House	256 Hammond St	Administrative	2000	16,407
Welch Hall	182 Hammond St	Student Residence	1965	40,724
Weston Observatory	Weston, MA	Research & Administrative	1948	22,182
Williams Hall	144 Hammond St	Student Residence	1965	40,738
Xavier Hall	44 Tudor Rd	Student Residence	1955	16,706
---	2 Boston Rd Property	TBD	2000	16,591
---	4 Quincy Rd	Residence	2002	4,801
---	11 Chestnut Hill Rd	Residence	2000	5,334
---	14 Mayflower Rd	Administrative	1998	5,245
---	21 Campanella Way	Academic & Administrative	2002	154,506
---	22 Stone Ave	Administrative	1999	4,632
---	24 Quincy Rd	Academic	1998	4,317
---	25 Lawrence Ave	Administrative	1993	5,180
---	30 Quincy Rd	Jesuit Residence	1999	4,534
---	31 Lawrence Ave	Academic	1979	5,105
---	31 Lawrence Ave Garage	Administrative	1996	1,985
---	32 Mayflower Rd	Residence	2002	4,833
---	36 College Rd	Administrative	1974	3,766
---	40 Old Colony Rd	Residence	2001	6,400
---	42 St. Stephens Green	Administrative	2000	6,610
---	43 St. Stephens Green	Administrative	2000	6,473
---	50 College Rd	Administrative	1996	4,303
---	55 Lee Rd	Administrative	1978	7,363
---	66 Commonwealth Ave	Student Residence & Admin	1989	58,779
---	66 Lee Rd	Residence	1999	2,510
---	90 St. Thomas More Rd	Student Residence	1993	110,487
---	130 Beacon			

## Boston College Properties Spring 2003

	Building Gross Square Footage	Acres		Building Gross Square Footage	Acres
<b>UPPER CAMPUS</b>			<b>OUTLYING PROPERTIES</b>		
Roncalli, Welch and Williams Halls	122,136	3 1	<b>Newton</b>		
O'Connell House and Upper Campus Dormitories	325,720	10 9	130 Beacon St	9,340	0 3
<b>Total Upper Campus</b>	<b>447,856</b>	<b>14 0</b>	142 Beacon St	3,446	0 2
<b>MIDDLE CAMPUS</b>			194 Beacon St	5,628	0 3
Area bounded by Beacon St , Lower Campus Rd , College Rd and Commonwealth Ave - including the Ignacio and Rubenstein Residence Halls, 66 Commonwealth Ave Residence Hall, Gabelli Hall, Vouté Hall, Southwell Hall, and the Merkert Chemistry Center			262 Beacon St (Daly House)	5,584	0 5
	2,199,485	43 2	256 Hammond St (Waul House)	16,407	1 1
4 Quincy Rd	4,801	0 3	258 Hammond St (Hovey House)	11,148	3 4
14 Mayflower Rd	5,245	0 2	292 Hammond St (Murray House & Carriage House)	11,108	0 8
18 Old Colony Rd (Botolph House)	7,136	0 4	300 Hammond St (Connolly House & Carriage House)	20,834	1 6
24 Quincy Rd	4,317	0 2	314 Hammond St (Haley House)	9,294	0 8
30 Quincy Rd	4,534	0 2	350 Beacon St	3,329	0 3
32 Mayflower Rd	4,833	0 2	11 Chestnut Hill Rd	5,334	0 3
36 College Rd	3,766	0 2	22 Stone Avenue	4,632	0 2
40 Old Colony Rd	6,400	0 2	<b>Total Che0037 Tc 0 0A2iSQ36.36 208.08 262.08 -0.72 refB7(108)-3726(0)-247(8)]TJ0.0:6(56(Td[(Tot)u</b>		
50 College Rd	4,303	0 2			
72 College Rd (Thea Bowman AHANA Ctr)	3,528	0 2			
78 College Rd (Brock House)	4,146	0 1			
84 College Rd (Bourneuf House)	4,460	0 2			
90 College Rd (Donaldson House)	3,910	0 2			
96 College Rd (Rahner House)	2,799	0 1			
102 College Rd (Faber House)	3,081	0 2			
110 College Rd (Heffernan House)	4,756	0 1			
116 College Rd (Hopkins House)	4,274	0 1			
122 College Rd (Lawrence House)	3,681	0 1			
176 Commonwealth Ave (Bea House)	4,685	0 2			
<b>Total Middle Campus</b>	<b>2,284,140</b>	<b>46 8</b>			
<b>LOWER CAMPUS</b>					
St Thomas More Road (excluding MDC Property) --	2,494,099	52 7			
2150 Commonwealth Ave (St Thomas More Hall)	64,584	3 4			
<b>Total Lower Campus</b>	<b>2,558,683</b>	<b>56 1</b>			
<b>Total Chestnut Hill Campus</b>	<b>5,290,679</b>	<b>116 9</b>			
<b>NEWTON CAMPUS</b>	<b>553,783</b>	<b>40 3</b>			
<b>Total Chestnut Hill and Newton Campuses</b>	<b>5,844,462</b>	<b>157 2</b>			

## Facility Capacities Fall 2003

Lecture/Event Facility & Location	Standard Seating	Lecture/Event Facility & Location	Standard Seating
<b>Auditoriums</b>		<b>Athletics</b>	
Cushing Hall 001	185	Alumni Stadium	44,500
Devlin Hall 008	297	Kelley Rink, Conte Forum	9,160
Fulton Hall 511	200	Power Gymnasium, Conte Forum	975
Gasson Hall 305 (Fulton Debate)	99	The Shea Room, Conte Forum	300
Higgins 300	153	Flynn Student Recreation Complex	2,809
Higgins 310	80	Court A	1,500
McGuinn Hall 121	256	Court B	1,309
Merkert Chemistry Center 127	150		
Robsham Theater Arts Center	600		
Stuart Hall 315, Newton Campus	150		
Stuart Hall 411, Newton Campus	100		
Law School East Wing 120, Newton	125		
Law School East Wing 115a, Newton	150		
Law School East Win			



Residence Hall Capacities\*  
Fall 2003

---



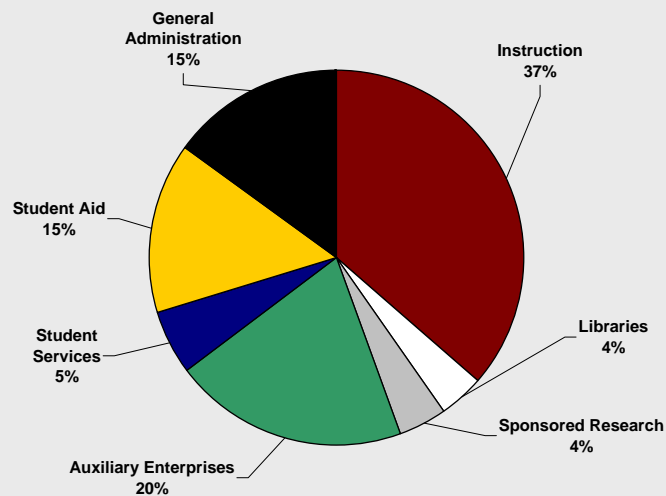
## Highlights of Financial Operations For the Five Years Ending May 31, 2003 (Dollars in Millions)

	1999	2000	2001	2002	2003
<b>Operating revenues</b>					
Tuition and fees	\$252.2	\$270.2	\$277.0	\$290.9	\$307.6
Sponsored research and training grants	23.8	29.1	32.0	35.0	35.3
Government grants and student aid	4.6	5.0	5.1	5.5	5.3
Auxiliary enterprises	90.4	90.7	93.1	101.9	106.1
Other revenues	7.1	9.5	9.1	9.4	8.8
<b>Total operating revenues</b>	<b>378.1</b>	<b>404.5</b>	<b>416.3</b>	<b>442.7</b>	<b>463.1</b>
Nonoperating assets used for operations	17.3	25.2	39.5	41.8	52.1
<b>Total operating revenues and other support</b>	<b>\$395.4</b>	<b>\$429.7</b>	<b>\$455.8</b>	<b>\$484.5</b>	<b>\$515.2</b>
<b>Expenses</b>					
Instruction	\$140.2	\$154.3	\$167.1	\$177.2	\$187.7
Libraries	17.2	17.7	18.4	18.9	19.9
Sponsored research	13.6	17.2	17.8	19.7	20.7
Student services	19.4	23.0	25.2	26.1	28.2
Student aid	62.8	67.7	69.2	74.0	77.2
General administration	53.9	60.1	63.7	68.4	76.6
Plant maintenance	-	-	-	-	-
Auxiliary enterprises	88.2	89.7	94.4	100.2	104.9
Other	-	-	-	-	-
<b>Total expenses</b>	<b>\$395.3</b>	<b>\$429.7</b>	<b>\$455.8</b>	<b>\$484.5</b>	<b>\$515.2</b>
<b>Excess of operating revenues over expenses</b>	<b>\$0.1</b>	-	-	-	-

Note: Costs associated with the operation and maintenance of plant facilities are functionally allocated. These costs totaled \$ 26.7, \$28.0, \$29.7, \$30.0, and \$33.4 million for fiscal years 1999, 2000, 2001, 2002, and 2003, respectively.

Source: Office of the Controller

### Total Operating Expenses Fiscal Year 2002-2003



Condensed Statement of Financial Position  
For the Five Years Ending May 31, 2003 (Dollars in Millions)

	1999	2000	2001	2002	2003
<b>Assets</b>					
Investments	\$985.4	\$1,136.5	\$1,128.2	\$1,143.0	\$1,091.2
Trustee deposits	62.1	29.3	35.2	28.9	8.5
Receivables & other assets	116.1	139.1	176.1	200.5	215.1
Physical plant	677.8	763.4	849.4	934.7	997.4
Accumulated depreciation/amortization	(185.1)	(220.2)	(242.4)	(272.7)	(299.8)
<b>Total assets</b>	<b>\$1,656.3</b>	<b>\$1,848.1</b>	<b>\$1,946.5</b>	<b>\$2,034.4</b>	<b>\$2,012.4</b>
<b>Liabilities</b>					
Payables and accrued liabilities	\$86.5	\$90.6	\$94.0	\$97.4	\$95.5
U.S. Government loan advances	29.8	31.0	31.9	32.8	33.6

## Tuition and Fees For the Ten Years Ending May 31, 2003

	1995	1996	1997	1998	1999	2000	2001	2002	2003	2004
<b>Undergraduate Schools</b>										
Arts & Science, Education, Management, Nursing	\$16,640	\$17,890	\$18,820	\$19,770	\$20,760	\$21,700	\$22,680	\$24,050	\$25,430	\$27,080
Advancing Studies (per course)	704	750	790	830	872	912	954	1,002	1,054	1,102
Summer Session (per course)	288	308	324	342	360	378	396	416	438	458
<b>Graduate Schools</b>										
Arts & Science (per credit hour)	\$502	\$536	\$566	\$596	\$626	\$656	\$700	\$736	\$774	\$810
Education, Nursing (per credit hour)	502	536	566	596	626	656	700	722	760	796
Law School	18,940	20,180	21,230	22,300	23,420	24,480	25,790	27,080	28,440	29,720
Management (per credit hour)	574	612	646	680	714	748	792	832	874	914
Social Work	14,930	15,910	16,740	17,580	18,460	19,300	20,170	21,180	22,240	-
MSW part-time (per credit hour)	404	432	456	480	504	526	550	578	608	704
DSW part-time (per credit hour)	464	496	524	552	580	606	634	666	700	704

---

**Boston College Undergraduate Tuition Restated in 1982-84 Dollars\***  
**Effect of Inflation and Real Growth**

---

<b>Academic Year</b>	<b>Tuition in Absolute Dollars</b>	<b>Consumer Price Index**</b>	<b>Tuition in Constant 1982-84 Dollars</b>
1989-90	\$11,720	126.1	\$9,294
1990-91	\$12,700	133.8	\$9,492
1991-92	\$13,690	137.9	\$9,927
1992-93	\$14,580	141.9	\$10,275
1993-94	\$15,570	145.8	\$10,679
1994-95	\$16,640	149.7	\$11,116
1995-96	\$17,890	153.5	\$11,655
1996-97	\$18,820	158.6	\$11,866
1997-98	\$19,770	161.3	

**Boston College Tuition Increases, Restated in 1982-84 Dollars**  
**Effect of Inflation and Real Growth**



---

## Boston College Libraries

---

---

## Digital Library Services

### **Quest: The Library Information System**

Quest, the Libraries' Web based integrated system provides convenient access to the Libraries' collections, digital resources, and services from [www.bc.edu/quest](http://www.bc.edu/quest). It offers a variety of methods for finding books, periodicals, media resources, microforms, newspapers, and electronic materials.

Quest can easily be searched from any Web browser regardless of platform or location, 24 hours a day, seven days a week. Users can interact with the system and receive immediate feedback on the status of requests; they can place a hold, recall or request rush processing for a new book right from their desktop. Users can also initiate and track requests for document delivery and interlibrary loan transactions, and may renew materials that are currently charged to them. The Web interface and expanded cataloging capabilities allow unprecedented access to thousands of Web accessible scholarly resources, to full text journals and to digital collections of photographs and other material.

### **Digital Resources**

The Boston College Libraries offer access to hundreds of electronic indexes and databases. A growing number of these databases include full text access to thousands of books and journals directly from the researcher's desktop. See the list of Online Databases on the Libraries' home page, [www.bc.edu/libraries.html](http://www.bc.edu/libraries.html) to get a sense of the range of



## Academic Development Center

The ADC is a comprehensive, inclusive resource serving all of the University's students and faculty. The mission of the Center is to enhance teaching and learning across the university. One of the ADC's three professional staff members assists students with learning disabilities, helping to ensure their academic success at Boston College. The Center also sponsors seminars, workshops, and discussions for faculty and graduate teaching fellows on strategies for successful teaching and learning.

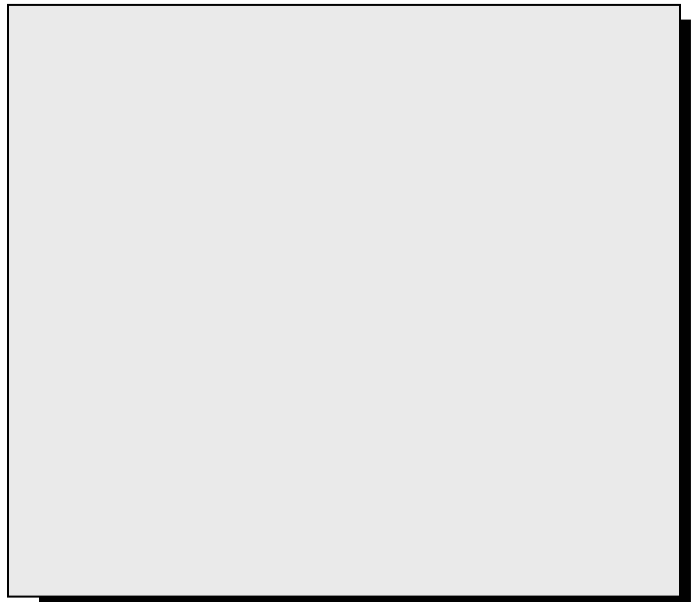
To address the needs of the great majority of Boston College students, the Center provides tutoring for more than 60 courses, including calculus, statistics, biology, chemistry, nursing, accounting, classical and foreign languages, English as a Second





## The McMullen Museum of Art

The Charles S. and Isabella V. McMullen Museum of Art aims to increase understanding of the visual arts, to encourage inquiry, and to enrich learning through the display of a notable permanent collection and special exhibitions of international importance. The Museum occupies two floors of Devlin Hall. Spacious galleries with movable walls provide flexible exhibition spaces that rival venues in larger museums. The Museum maintains an active special exhibition program, bringing outstanding works from around the world to Chestnut Hill. The Museum organizes public lectures, symposia, workshops, film series, and gallery tours to accompany current exhibitions. Begun in the nineteenth century, the University's permanent collection contains works that span the history of art from Europe, Asia, and the Americas. Outstanding among them are Gothic and Baroque tapestries, Italian paintings of the sixteenth and seventeenth centuries, American landscape paintings of the nineteenth and early twentieth centuries, and Japanese prints. The collection is displayed on a rotating basis in the Museum's galleries. In keeping





8 FY 2002 AS A RESULT OF A MATERIAL 10% BOSTON COLLEGE CONTINUED TO INCREASE RESEARCH TRENDS TO LARGE AMOUNTS AND OTHERS. REMAINS A GENERAL UPWARD TREND IN SPONSORED PROJECT ACTIVITY AT BOSTON COLLEGE. IN ADDITION, THERE IS A GREATER NUMBER OF FACULTY PARTICIPATING WITH THE OFFICE FOR SPONSORED PROGRAMS TO SECURE EXTERNAL FUNDING FROM BOTH FEDERAL AND NON-FEDERAL SPONSORS.

SOURCE: OFFICE OF SPONSORED PROGRAMS

## Summary of Sponsored Project Awards 2002-2003

Department	No. of Awards	Amount	Department	No. of Awards	Amount
Associate Vice President for Research	1	35,000	Political Science	3	\$116,032
Biology	20	2,533,632	Psychology	11	495,217
Center for Corporate Citizenship	1	150,000	School of Education	26	3,073,822
Center for Religion & American Public Life	6	358,013	Campus School	6	2,851,571
Chemistry	43	5,082,211	Center for Child, Family and Community Partnerships	7	435,360
Computer Science	1	74,400	CSTEPP	12	1,478,183
Fine Arts	8	236,700	International Study Center (TIMSS)	13	2,961,370
Geology and Geophysics	5	408,477	School of Management	13	2,581,239
History	2	160,000	School of Nursing	14	794,344
Institute for Scientific Research	47	4,560,988	Graduate School of Social Work	29	2,390,439
Irish Programs	2	500,000	Social Welfare Research Institute	1	100,000
Law School	5	150,259	Sociology	3	166,755
Learning to Learn	1	230,341	Theology	3	99,000
Mathematics	7	360,429	<b>Total</b>	<b>307</b>	<b>35,006,303</b>
Physics	17	2,622,521			

Source: Office of Sponsored Programs

\* The amounts represent actual accounted expenditures (including Pell Grants) for the referenced fiscal year.

Source: Office of the Controller

---

**Sponsored Projects by Department**  
**Total Accounted Expense (Thousands of Dollars)**

---

<b>Department/School</b>	<b>1993-94</b>	<b>1994-95</b>	<b>1995-96</b>	<b>1996-97</b>	<b>1997-98</b>	<b>1998-99</b>	<b>1999-00</b>	<b>2000-01</b>	<b>2001-02</b>	<b>2002-03</b>
College of Arts & Sciences	60	56	194	192	142	52	15	0	0	0







## Number of Sponsored Project Awards Received By Department, 1993-94 through 2002-03

	1993-94	1994-95	1995-96	1996-97	1997-98	1998-99	1999-00	2000-01	2001-02	2002-03
Assoc VP for Research	-	-	-	-	-	-	2	1	2	1
Biology	10	12	15	16	12	17	16	17	24	20
Chemistry	33	34	35	38	46	40	52	45	40	43
Computer Science	-	-	-	-	-	2	-	1	1	1
Economics	2	8	6	5	2	4	3	1	4	-
English	-	-	-	-	-	-	-	-	-	-
Fine Arts	2	3	2	1	1	4	3	6	5	8
Geology and Geophysics <sup>1</sup>	7	5	5	4	8	10	9	6	9	5
Grad School of A&S	1	2	3	1	1	1	1	-	-	-
History	2	1	-	-	3	-	1	3	1	2
IREPM <sup>2</sup>	-	-	-	-	1	-	1	-	-	-
Inst for Scien Research	14	15	16	13	17	15	15	42	34	47
Mathematics <sup>3</sup>	2	2	1	2	3	5	4	5	4	7
Music	-	-	-	1	-	-	-	-	-	-
Philosophy	1	-	2	1	-	1	-	-	1	-
Physics	4	4	3	10	11	18	25	21	15	17
Political Science	1	3	2	3	6	10	4	6	5	3
Psychology	6	7	8	5	5	8	5	9	3	11
Romance Languages	1	-	-	-	-	1	-	1	1	-
Slavic/Eastern Languages	-	-	1	1	2	1	-	-	-	-
Sociology	2	-	1	5	6	4	3	1	4	3
SWRI <sup>4</sup>	1	2	2	2	2	1	2	-	1	3
Theology	6	2	2	4	4	4	3	2	1	1
School of Education	11	17	18	27	26	29	38	33	23	26
Campus School	5	5	4	5	6	5	9	6	8	6
CSTECP <sup>5</sup>	7	4	9	11	1	28	12	12	12	12
TIMSS <sup>6</sup>	-	-	-	-	-	-	24	20	16	13
Law School	2	3	4	2	3	3	5	3	7	5
School of Management	5	4	2	5	4	6	9	17	7	13
School of Nursing	10	9	12	11	12	12	10	13	16	14
Grad Schl of Social Work	7	9	6	11	8	7	16	12	13	29
CCFCP <sup>7</sup>	-	-	-	1	1	7	1	16	12	7
BCRAPL <sup>8</sup>	-	-	-	-	-	-	2	1	3	6
CCCR <sup>9</sup>	3	-	-	-	-	3	-	-	3	1

L





---

## University Research Institutes and Centers

---

### **Center for Child, Family, and Community Partnerships**

The Center for Child, Family and Community Partnerships is an “outreach scholarship” program that fosters collaboration among Boston College faculty and students, and community leaders in health care, social service, economic development, and education.

The goal of the participants is to create stronger, healthier, and more economically sound communities. The Center offers technical assistance, program evaluation, needs assessment, training, and consultation to community organizations.

Web site: <http://www.csteep.bc.edu/ccfcp/>.

### **Center for Corporate Citizenship at Boston College**

The Center for Corporate Citizenship provides leadership in establishing corporate citizenship as a business essential, so all companies act as economic and social assets by integrating societal interests with other core business objectives. Part of Boston College’s Carroll School of Management, The Center offers research and development on corporate citizenship; publications that include an on-line newsletter, research reports, and white papers; executive education programs, including on-site and custom programs and a Certificate program in corporate community involvement; convenings including the annual

International Corporate Citizenship Conference, titact asnerksh, aguancet(tef7pecon C)agem te Cia5s.0005 itimnrt 0.7o3.3(ranart 0.7u)f Manategc

## University Research Institutes and Centers (continued)

---

has conducted international comparative research on educational achievement and testing, evaluation and public policy studies to improve school assessment practices. CSTEPP researchers work on both small and large scales - individual schools, districts, and states - to advance educational te

**Jesuit Institute**

The Jesuit Institute was established in 1988 to contribute towards the response to the question of identity. The Institute, initially funded by the Jesuit Community at Boston College, is not an additional or separate academic program. It is rather a research institute which works in cooperation with existing schools, programs and faculties, primarily but not exclusively, at Boston College. Within an atmosphere of complete academic freedom essential to a university, the Institute engages positively in the intellectual exchange that constitutes the University. Its overarching purpose is to foster research and collaborate interchange upon those issues that emerge at the intersection of faith and culture. Through its programs, the Institute does this in two ways: by supporting the exploration of those religious and ethical questions raised by this intersection and by supporting the presence of scholars committed to these questions.

Web site: [http://www.bc.edu/bc\\_org/avp/acavp/jesin/](http://www.bc.edu/bc_org/avp/acavp/jesin/).

**Lonergan Center**

Studies related to the work of the Jesuit theologian and philosopher Bernard Lonergan (1904-1984) are fostered and advanced in the Lonergan Center at Boston College. Inaugurated in 1986, the Center houses a growing collection of Lonergan's published and unpublished writings as well as secondary materials and reference works, and it also serves as a seminar and meeting room. Boston College sponsors the annual Lonergan Institute, which provides resources, lectures, and workshops for the study of the thought of Bernard Lonergan, S.J.

Web site: <http://www.bc.edu/lonergan>.

**Mathematics Institute**

The Boston College Mathematics Institute was established in 1957 as a unit separate from the Mathematics Department to assist in the effort to improve the content and instructional practice of mathematics at school level. In the 1960's and 1970's the primary focus of the Institute was on providing veteran teachers with renewal programs and professional development opportunities to update and deepen their background in mathematics. The National Science Foundation was a major source of funding. Concurrently, Institute staff developed some supplementary instructional materials to use with students in the grades K-12. At present, the Mathematics Institute offers professional enhancement courses for teachers in the summers at Boston College and other sites. Other current projects include research studies and content development related to school level mathematics concerns. Web site: <http://www.bc.edu/mathinst>.

**Boisi Center for Religion and American Public Life**

The Center for Religion and American Public Life was founded to bring together high quality research and scholarship on religion to bear on issues of public policy in America. The Center's goal is not to advance any ideological agenda, whether liberal or conservative. The Center seeks instead to be the sponsor of dialogue and discussion which brings together people whose primary concerns are religious with people whose primary concerns are political, in the belief that they will find common ground. The main goals of the Center include the promotion of scholarship dealing with religion and public life, faculty and student development at Boston College, and outreach activities

that contribute to a more robust public discussion of critical issues. Web site: [http://www.bc.edu/bc\\_org/research/rapl](http://www.bc.edu/bc_org/research/rapl).

**Small Business Development Center**

The Small Business Development Center (SBDC) provides managerial, financial and technical assistance and training to small business people in the Greater Boston area. Prospective and active small business people can receive one-on-one counseling and consultative assistance in a range of business areas such as finance, marketing, planning, operations, accounting and controls. The SBDC also offers specially designed small business management training workshops. Topics include writing a business plan, financial planning, marketing, strategic planning, cash flow and general management as well as other varied topics. Web site: [http://www.bc.edu/bc\\_org/avp/csom/executive/sbdc](http://www.bc.edu/bc_org/avp/csom/executive/sbdc).

**Social Welfare Research Institute**

The Social Welfare Research Institute (SWRI) is a multidisciplinary research center specializing in the study of spirituality, wealth, philanthropy, and other aspects of cultural life in an age of affluence. SWRI is a recognized authority on the meaning and practice of care, on the patterns and trends in individual charitable giving, on philanthropy by the wealthy, and forthcoming \$41 trillion wealth transfer. SWRI has published research on a new donor-centered approach to fundraising that moves away from the "scolding model"; on the spiritual questions raised by wealth; on survey methodology; on the Boston Area Diary Study of formal and informal care in daily life; and on financial transfers to family and philanthropy by the wealthy. Other areas of research include the "new physics of philanthropy," which identifies the economic and social-psychological vectors inclining wealth holders toward philanthropy, among them, an entrepreneurial disposition, identification, association, and gratitude. One new research direction is reconceptualizing planned giving as part of a broader process of gift-planning and life-planning. Another is developing and training others to use a discernment methodology for guiding wealth holders through a self-reflective process of decision-making about wise choices in finances and philanthropy, and based on the Ignatian principles of liberty and inspiration.

Web site: <http://www.bc.edu/swri>.

**Weston Observatory**

Weston Observatory, formerly Weston College Seismic Station (1928-1949), is a part of the Department of Geology and Geophysics of Boston College. Located 10 miles from the main campus, the Observatory is an interdisciplinary research facility of the Department, and a center for research in the fields of geophysics, geology, and related fields. Weston Observatory was one of the first participating facilities in the Worldwide Standardized Seismograph Network and operates a twelve-station regional seismic network that records data on earthquakes in the northeast, as well as distant earthquakes. The facilities at Weston Observatory offer students a unique opportunity to work on exciting projects with modern, sophisticated, scientific research equipment in a number of different areas of scientific and environmental interest.

Web site: <http://www.bc.edu/westonobservatory>.

## Intercollegiate Athletic Season Highlights 2002-2003

---

### **BASEBALL**

*Head Coach: Pete Hughes*

**Record:** 33-21 (13-11 BIG EAST)

**Recap:** After a slow start, the Eagles rebounded to win 18 of their last 28 games. Included in that were seven- and five-game win streaks. At various points of the year, Boston College received votes in the *Sports Weekly/ESPN Top 25*, *Baseball America* and *NCBWA* polls. The Eagles were led by a pair of aces: reigning BIG EAST Pitcher of the Year Chris Lambert, who, as of April 23, led the conference strikeouts (61) and Kevin Shepard, who sported the league's second-lowest ERA (2.18). Drew Locke starred at the plate as he led the team in batting average (.349), runs batted in (24) and runs scored (25). Ryan Morgan excelled both as a hitter and the team's closer, posting the team's second-highest average (.306) as well as ranking in a tie for second place in the BIG EAST in saves (eight).

### **BASKETBALL**

*Men's Head Coach: Al Skinner*

**Men's Record:** 19-12 overall (10-6 BIG EAST East) **Postseason:** National Invitation Tournament

**Men's Recap:** The team finished with a 19-12 mark, including a 10-6 record in BIG EAST contests. BC shared the BIG EAST East Division regular-season title with Connecticut. The Eagles earned a berth in the National Invitation Tournament, their third consecutive season in post-season action. Troy Bell captured BIG EAST Player of the Year honors as well as several All-America accolades. Craig Smith gained BIG EAST second team honors and All-Rookie Team honors. Smith set a BC record for freshman scoring with 617 points.

*Women's Head Coach: Cathy Inglese*

**Women's Record:** 22-9 overall (12-4 BIG EAST)

**Postseason:** NCAA Tournament

**Women's Recap:** The team advanced to the school's first-ever women's basketball Sweet Sixteen with tournament wins over Old Dominion and No. 16 Vanderbilt. As a No. 5 seed in the East Region, the team's season came to an end at the hands of top-ranked Connecticut. Two Eagles -- Brianne Stepherson and Amber Jacobs -- joined the 1,000-point club while Stepherson finished her career in the top 10 of several BC categories, including points (10th with 1,115), steals (fifth with 171), and assists (second with 534). Becky Gottstein finished her career as the fifth-leading scorer (1,490) and second-leading rebounder (884) at Boston College.

### **CROSS COUNTRY**

*Head Coach: Randy Thomas*

**Men's Conference Finish:** Fifth

**Men's Recap:**

tri-captain Sean McReynolds led the Eagles in three of their four tournaments.

*Women's Head Coach: Frank Kolarik*

**Women's Recap:** The team opened the spring season with the goal of qualifying for the inaugural BIG EAST Championship. Led by sophomore Kori Goulet, the Eagles were one of four teams selected for the event, held at Notre Dame's Warren Golf Course. There, BC finished third, eight strokes ahead of fourth-place finisher Georgetown. Other highlights of the season included a second-place finish at the Brown Invitational. In the fall, BC had three second-place finishes; at the Rutgers Invitational, the ECAC Championship and the Dartmouth Invitational.

### **ICE HOCKEY**

*Men's Head Coach: Jerry York*

**Men's Record:** 24-11-4 (16-6-2 Hockey East)

**Postseason:** NCAA Tournament

**Men's Recap:** Boston College earned a share of the Hockey East regular-season crown, marking the school's eighth title – a league-high – in 19 seasons. Ben Eaves earned All-America first team honors, while J.D. Forrest earned All-America second team accolades. The regular season also saw Eaves earn Hockey East Co-Player of the Year honors and the 2002-03 scoring title. In addition, sophomore goaltender Matti Kaltainen was named the HOCKEY EAST Goaltender of the Year with a league-low 2.20 goals-against average. The Eagles received an at-large bid to the NCAA Tournament and were the second seed in the East Regional, held in Providence, R.I. BC's NCAA Tournament appearance was its 23rd all-time, and fifth in the past six seasons.

*Women's Head Coach: Tom Babson*

**Women's Record:** 12-17-1 (2-10-3 Hockey East)

**Women's Recap:** Boston College had a record-setting year, posting the most Division I wins in program history, and earning its best record since the 1994-95 campaign. The Eagles defeated Northeastern in the first round of the Beanpot, to earn BC's first-ever win over the Huskies and its first Hockey East victory. A talented tandem of young goaltenders, Lisa Davis and Alison Quandt, led the Eagles to success, while making their own marks in the BC record books.

### **INDOOR TRACK**

*Head Coach: Randy Thomas*

**Men's Recap:** The Eagles competed hard during the indoor season, coming up with several excellent performances at a number of meets. The team finished in a tie for second at the Terrier Cup, and placed runner-up at a tri-meet against BU and Providence as well as one versus New Hampshire and Vermont. The 4x800-meter relay team -- consisting of Vernon Mickle, Dan MacIsaac, Anthony Calabro and Brenton Wheatley -- grabbed a point at the BIG EAST Championships courtesy of its eighth-place finish. Mickle followed that up with a runner-up finish in the 800 at the New England Championships, at which Boston College came in 10th out of 31 teams.

**Women's Recap:** The Eagles capped a season filled with record-setting individual performances with a 10th-place finish at the BIG EAST Championships. Julie Spolidoro was crowned BIG EAST champion in the 5,000. At the New England Championships, the team placed eighth, with Christina Regan and Melissa Sherman winning the pentathlon and 500, respectively. Maggie Guiney, Jennifer Donovan and the distance medley relay all scored points for the Eagles as they finished 19th at ECACs the following week. Spolidoro went on to become an All-American after taking 10th in the 3,000 at nationals.

### **LACROSSE**

*Head Coach: Shari Krasnoo*

**Record:** 9-6 overall (2-4 BIG EAST)

**Recap:** The women's lacrosse team finished with a record of 9-6. Two of the team's losses this season come by just one goal, each occurring early in the season. Jacklyn Yovankin was named the BIG EAST Player of the Week and selected to the *womenslacrosse.com*



---

## Varsity Sports Records

---

	1998-99	1999-00	2000-01	2001-02	2002-03		1998-99	1999-00	2000-01	2001-02	2002-03
	W-L-T	W-L-T	W-L-T	W-L-T	W-L-T		W-L-T	W-L-T	W-L-T	W-L-T	W-L-T
<b>Men's Records</b>						<b>Women's Records</b>					
Football	4-7	8-4	7-5	8-4	9-4	Basketball	22-8	26-9	14-15	23-8	22-9
Basketball	6-21	11-19	27-5	20-12	19-12	Field Hockey	9-11	9-11	10-8	11-8	15-6
Ice Hockey	27-11-4	29-12-1	33-8-2	18-18-2	24-11-4	Ice Hockey					



## Founder of Boston College

Rev. John McElroy, S.J.

Pastor, Immaculate Conception Parish, Boston

1861-1863

## Honorary Degrees Awarded by Boston College 1955-2003

### 1955

Fred J. Driscoll, LL.D.

Christian A. Herter, LL.D.

Edward A. Hogan, Jr., LL.D.\*

Rear Adm. Bartholomew W. Hogan, Sc.D.

John B. Hynes, LL.D.

His Beatitude Maximos IV, LL.D.

(August 23, 1955)

Valerian Cardinal Gracias, LL.D.

Russel Kirk, Litt.D.

Edward A. Sullivan, LL.D.

### 1956

Bartholomew A. Brickley, LL.D.

Peter J. W. Debye, Sc.D.

Most Rev. Frederick A. Donaghy, LL.D.

John F. Kennedy, LL.D.\*

John W. King, LL.D.

Charles Munch, D. Mus.

Edward F. Williams, LL.D.

### 1957

Wallace E. Carroll, LL.D.

Arthur J. Kelly, LL.D.

Augustus C. Long, LL.D.\*

Adrian O'Keefe, LL.D.

Very Rev. Msgr. Patrick W. Skehan, LL.D.

Nils Y. Wessell, LL.D.

### 1958

Most Rev. Amleto G. Cicognani, LL.D.

(April 21, 1958)

Carl J. Gilbert, LL.D.

Paul Horgan, Litt.D.

Barnab

Ley L

## Founder of Boston College

Rev. John McElroy, S.J.

Pastor, Immaculate Conception Parish, Boston

1861-1863

## Honorary Degrees Awarded by Boston College 1955-2003

### 1955

Fred J. Driscoll, LL.D.

Christian A. Herter, LL.D.

Edward A. Hogan, Jr., LL.D.\*

Rear Adm. Bartholomew W. Hogan, Sc.D.

John B. Hynes, LL.D.

His Beatitude Maximos IV, LL.D.

(August 23, 1955)

Valerian Cardinal Gracias, LL.D.

Russel Kirk, Litt.D.

Edward A. Sullivan, LL.D.

### 1956

Bartholomew A. Brickley, LL.D.

Peter J. W. Debye, Sc.D.

Most Rev. Frederick A. Donaghy, LL.D.

John F. Kennedy, LL.D.\*

John W. King, LL.D.

Charles Munch, D. Mus.

Edward F. Williams, LL.D.

### 1957

Wallace E. Carroll, LL.D.

Arthur J. Kelly, LL.D.

Augustus C. Long, LL.D.\*

Adrian O'Keefe, LL.D.

Very Rev. Msgr. Patrick W. Skehan, LL.D.

Nils Y. Wessell, LL.D.

### 1958

Most Rev. Amleto G. Cicognani, LL.D.

(April 21, 1958)

Carl J. Gilbert, LL.D.

Paul Horgan, Litt.D.

Barnab

Ley L

Charles Malik, LL.D.\*  
Most Rev. Russell J. McVinney, LL.D.  
Samuel Eliot Morison, LL.D.  
Rt. Rev. Matthew P. Stapleton, LL.D.  
Rev. Henry M. Brock, S.J., D.Sc.  
(October 12, 1960

**1961**  
Allen W. Dulles, LL.D.  
Anthony Julian, LL.D.  
Robert D. Murphy, LL.D.\*  
Louis R. Perini, LL.D.  
Abraham Ribicoff, LL.D.  
Rt. Rev. Robert J. Sennott, LL.D.  
Edward Teller, LL.D.

**1962**  
Detlev W. Bronk, D.Sc.\*  
Ralph J. Bunche, LL.D.  
Christopher J. Duncan, M.D., LL.D.  
Sir Alec Guinness, D.F.A.  
Rt. Rev. Francis J. Lally, Litt.D.  
Ralph Lowell, LL.D.  
Phyllis McGinley, Litt.D.

Ralph M. McNamara, LL.D.  
(Mu 193) 053(( )TJT\*-0.002 Tc0.0664 Tw[Rev.]-7.5E.)-6.7d.n n,  
(A 193) 053(( )TJ0 -1.2406 TD-0.0004 Tc-0.0058 Tw[L.Ra]-52(dy BRa)-52(ra)-4.9brra WRarackison LiD( )TJ0 -1.2481 TD0.0311 Tc-0.058 Tw( )200-7.5((053(A)-6.  
r,hor, LJ. D.  
JorJRa yMiClor, L. .D.  
mes. Rarat. Ri.D .  
Rt. Rev. Ryan, HL.D  
L u Sre.D.  
cLLt  
(obeot)3.9 Clifotnv Wet  
mer sEd.nche42 Colemca RinnRi(tt,75.1( .)-726Lu.D.  
i(Med.Pick5(Ar(d))L5E(t))T04 T248005B-D-0002A-636188C-100000A9A(D)-9eony oat-4.7D- L L c L.HLP1 TD-L.re6L.D5J. 53(A,(D5-9eo0 -1.8 -1.1sMost )fot)3st  
(6Lu-1.5(0)11(L.VD5)112(6L.D1 (tiboot))1272, -1.8 -1.-5.5(TD0.s-0t )-7.5 Jd.5(nc)-9.3(he42 )T2 1 Tf6 -1.2256 TD-0.0005 Tc-0.0004 Tw03Ram59Rev., L u h

Asa Smallidge Knowles, D.Sc.Ed.  
Most Rev. Joseph Francis Maguire, LL.D.  
Daniel Patrick Moynihan, LL.D.\*

**1977**

Rev. Raymond Edward Brown, Litt.D.\*  
Gerhard D. Bleicken, LL.D.  
Alice Bourneuf, D.Sc.  
James F. McDonough, M.D., D.Sc.  
Maria Tallchief Paschen, D.A.  
Michael Joseph Walsh, Litt.D.

**1978**

Bruno Bettelheim, Litt.D.  
Rev. Charles F. Donovan, S.J., L.H.D.  
Charles D. Ferris, LL.D.\*  
Marvin E. Frankel, LL.D.  
John William McDevitt, LL.D.  
Leo Perlis, D.S.S.

**1979**

Dorothy Baker, D.S.S.  
Edward Patrick Boland, LL.D.  
George P. Donaldson, LL.D.  
Richard Ellmann, L.H.D.  
Robben W. Fleming, L.H.D.  
Walter F. Mondale, LL.D.\*  
David S. Nelson, LL.D.\*

**1980**

Germaine Bree, Litt.D.\*  
Albert M. Folkard, L.H.D.  
Edward J. King, D.Pub.Admn.  
Joseph Cardinal Malula, LL.D.  
Thomas Aquinas Murphy, The Ignatius  
Medal (March 16, 1980)  
Bernard J. O'Keefe, D.E.Sc.  
Kevin H. White, LL.D.

**1981**

Thomas Cardinal Ó Fiaich, Litt.D.  
(October 23, 1981)  
Rev. Joseph Delphis Gauthier, S.J., L.H.D.  
Margaret M. Heckler, LL.D.  
Rose Fitzgerald Kennedy, L.H.D.  
Donald F. McHenry, LL.D.  
Thomas P. O'Neill, Jr., The Ignatius Medal\*  
Joseph Harry Silverstein, D.A.  
Paul Donovan Sullivan, D.S.S.

**1982**

Rev. Robert I. Burns, S.J., L.H.D.  
George Bush, LL.D.\*  
Robert A. Charpie, D.Sc.  
Dolores Hope, The Ignatius Medal  
(November 6, 1982)  
Josephine L. Taylor, D.Sc.Ed.

**1983**

Maya Angelou, L.H.D.  
Virginia A. Henderson, D.N.S.  
Joseph McKenney, D.Ed.  
Rev. Vincent T. O'Keefe, S.J., L.H.D.  
(March 13, 1983)  
Rev. Bruce J. Ritter, O.F.M., D.S.S.\*  
An Wang, LL.D.

**1984**

Leon Higginbotham, LL.D.  
Richard Hill, D.B.A.  
Most Rev. Bernard F. Law, S.T.D.\*  
Robert Merrifield, D.Sc.  
Muriel Sutherland Snowden, D.S.S.  
Otto Phillip Snowden, D.S.S.

**1985**

Rev. Frederick Joseph Adelman, S.J., L.H.D.  
Lena Frances Edwards, D.Sc.  
Rev. J. Bryan Hehir, LL.D.  
Agnes Mongan, D.F.A.  
Anthony John Francis O'Reilly, D.B.A.  
(March 17, 1985)  
Andrew J. Young, LL.D.\*  
Edward Zigler, L.H.D.

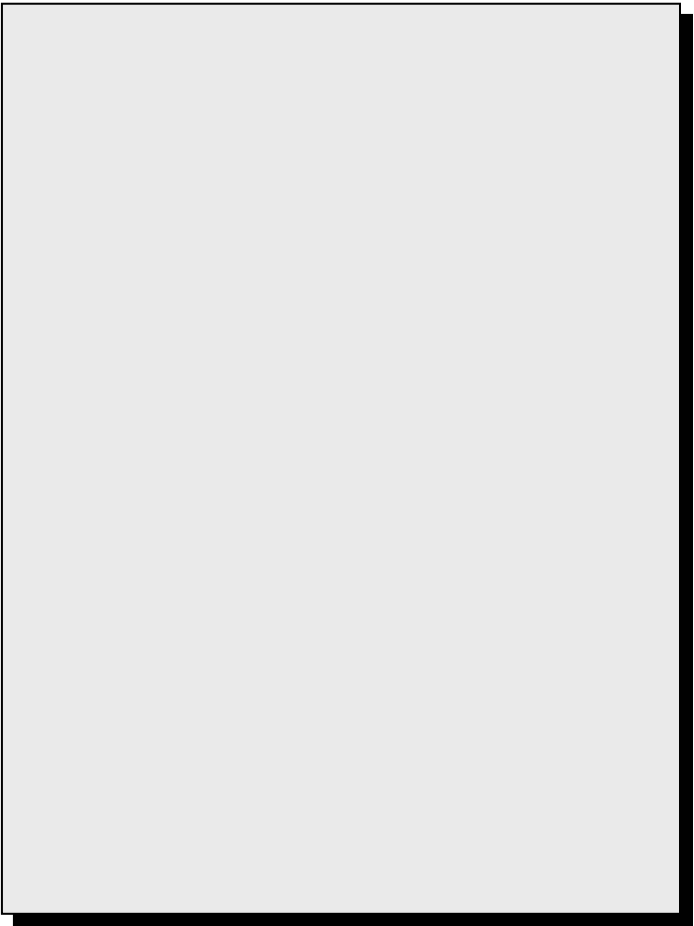
**1986**

Corazon C. Aquino, The Ignatius Medal  
(September 21, 1986)  
Guido Calabresi, LL.D.  
Jacques d'Amboise, D.F.A.  
Annie Dillard, L.H.D.  
Lionel B. Richie, Jr., D.Mus.  
Francis C. Rooney, Jr., D.B.A.  
Jamie Cardinal Sin, S.T.D.\*

**1987**

Josephine A. Dolan, D.N.S.  
(March 4, 1987)

1987



---

## Accrediting Agencies

---

AACSB International - Association to Advance Collegiate  
Schools of Business  
American Bar Association  
American Chemical Society  
American Psychological Association  
Association of American Law Schools

Commission on Collegiate Nursing Education  
Council on Social Work Education  
Interstate Certification Compact  
National Council for Accreditation of Teacher Education  
National League for Nursing  
New England Association of Schools and Colleges

Source: Deans' Offices

---

## Association Memberships\*

American Association of Colleges of Nursing  
American Association of College Registrars and  
Admissions Officers  
American Association of Colleges for Teacher Education  
American Association of Comparative Law  
American Association for Higher Education  
American Association for the History of Nursing  
American Association of University Women  
American Bar Association  
American Council on Education  
American Educational Research Association  
American Public Welfare Association  
Association of American Colleges and Universities  
Association of American Law Schools  
Association of Catholic Colleges and Universities  
Association of Colleges & Schools of Education in  
State Universities & Land Grant Colleges  
Association of Collegiate Schools of Planning  
Association for Continuing Higher Education  
Association of Independent Colleges and Universities  
in Massachusetts  
Association of Independent Liberal Arts Colleges for  
Teacher Education  
Association for Institutional Research  
Association of Jesuit Colleges and Universities  
Association for Supervision & Curriculum Development  
Association of Research Libraries  
Association of Teacher Educators  
Association of Urban Universities  
Boston Library Consortium  
Boston Theological Institute  
The College Board  
Commonwealth Education Deans' Council  
Council for Advancement and Support of Education  
Council for Exceptional Children  
Council of Graduate Schools  
Council of the Great City Schools  
Council on Legal Education Opportunity  
Council on Governmental Relations  
Council on Social Work Education  
Graduate Management Admission Council  
Holmes Partnership  
International Association of Schools of Social Work  
International Association of Universities  
International Federation of Catholic Universities  
Jesuit Conference of Nursing Programs  
Jesuit Student Personnel Association  
Law School Admission Council  
Massachusetts Association for Women in Education

Massachusetts Association of Colleges of Nursing  
Massachusetts Association of Colleges for  
Teacher Education  
Massachusetts Association of Early Childhood Education  
Massachusetts Association of School Superintendents  
Massachusetts Association for Supervision and  
Curriculum Development  
Massachusetts Council of

## Academic Department Locations

Accounting Department, CSOM.....	Fulton 520
Advancing Studies, Woods College of.....	McGuinn 100
Arts and Sciences, College of .....	Gasson 109A
Arts and Sciences, Graduate School of.....	McGuinn 221
Biology Department .....	Higgins 355
Business Law Department, CSOM .....	Fulton 420
Chemistry Department .....	Merkert 125
Classical Studies Department .....	Carney 122
Communication Department .....	21 Campanella Way 513A
Computer Science Department, CSOM .....	Fulton 460
Counseling, Developmental Psychology, and Research Methods Department, LSOE.....	Campion 309
Counseling Services, University .....	Gasson 108, Campion 301, Fulton 254
Economics Department.....	21 Campanella Way 412
Educational Administration and Higher Education Department, LSOE.....	Campion 205
Education, Lynch School of.....	Campion 101
English Department .....	Carney 446
Finance Department, CSOM .....	Fult
	Depart
	Geology and G
	German Studies

## Academic Calendars 2003-2004

### Fall Semester

August 25	Monday: Classes begin for 2nd and 3rd year law students
August 26	Tuesday: Classes begin for 1st year law students
September 1	Monday: Labor Day - No classes
September 2	Tuesday: Classes begin
October 13	Monday: Columbus Day - No classes
November 26 - 28	Wednesday - Friday: Thanksgiving Holidays
December 10 and 11	Wednesday - Thursday: Study days - No classes for undergraduate day students only
December 12 - 19	Friday - Friday: Term examinations

### Spring Semester

January 5	Monday: Classes begin for all law students
January 19	Monday: Martin Luther King, Jr. Day - No classes
January 20	Tuesday: Classes begin
March 1 - 5	Monday - Friday: Spring Vacation
April 8 - April 12	Thursday - Monday: Easter Weekend - No classes Holy Thursday, Good Friday, Easter Monday (except classes beginning at 4:00 p.m. and later)
April 19	Monday: Patriots Day - No classes
May 7 and 10	Friday - Monday: Study days - No classes for undergraduate day students only
May 11 - 18	Tuesday - Tuesday: Term examinations
May 24	Monday: Commencement
May 28	Friday: Law School Commencement

## 2004-2005

### Fall Semester

September 6	Monday: Labor Day - No classes
September 7	Tuesday: Classes Begin
October 11	Monday: Columbus Day - No classes
November 24 - 26	Wednesday - Friday: Thanksgiving Holidays
December 11 - 12	Saturday - Sunday: Study days - No classes for undergraduate day students only
December 13 - 20	Monday - Monday: Term Examinations

### Spring Semester

January 17	Monday: Martin Luther King, Jr. Day - No classes
January 18	Tuesday: Classes begin
March 7 - 11	Monday - Friday: Spring Vacation
March 24 - 28	Thursday - Monday: Easter Weekend - No classes Holy Thursday, Good Friday, Easter Monday (except classes beginning at 4:00 P.M. and later)
April 18	Monday: Patriot's Day - No classes
May 6 - 9	Friday - Monday: Study days - No classes for undergraduate day students only
May 10 - 17	Tuesday - Tuesday: Term Examinations
May 23	Monday: Commencement
May 27	Friday: Law School Commencement

## Sources of Fact Book Information 2003-2004

Academic Development Center  
 Academic Vice President's Office  
 Undergraduate Admission Office  
 Alumni Association  
 BCAA Compliance Office  
 Budget Office  
 Bureau of Conferences  
  
 Controller's Office  
 Deans' Offices  
 Dining Services  
 Enrollment Management Research  
 Flynn Recreation Complex  
 University Historian's Office  
 Human Resources  
 Information Technology Services  
 Jesuit Community  
 Language Laboratory  
 University Libraries  
 Marketing Communications  
 McMullen Museum of Art  
 Media Relations, Athletics Association  
 University Policies and Procedures  
 Office of the President  
 Public Affairs  
 Residential Life  
 Space Management  
 Sponsored Programs  
 Dean for Student Development  
 Student Financial Strategies  
 Student Services  
 Summer Session  
 University Archivist  
 University Relations Information Services  
 Weston Observatory



## Fact Book Index

- Academic Administration, 17  
 Academic Calendars, 106  
 Academic Department Locations, 105  
 Academic Development Center, 77  
 Academic Resources and Technologies, 74-79  
 Academic Vice President Units, 19  
 Accrediting Agencies, 104  
 Administration and Faculty, 14-27  
 Administrators, University, 21  
 Advancing Studies Enrollment, 33-35  
 AHANA and International Student Enrollment, 34, 39-40  
 Alumni and Development, 50-57  
 Alumni Association National Board of Directors, 50  
 Alumni Achievement Awards, 50  
 Alumni by Primary School, Gender, and Class, 52-54  
 Alumni Association Regional Chapters, 50  
 Alumni Donors by Primary School and Class, 56-57  
 Alumni, Geographic Distribution, 51  
 Alumni, by Region, 51  
 Applications, Acceptances, and Enrollment, Freshman, 31  
 Applications, Acceptances, and Enrollment, Transfer Students, 32  
 Archives, 77  
 Art Museum, 78  
 Association Memberships, 104  
 Athletics, 94-97
- Board of Trustee Chairmen, 16  
 Board of Trustee Membership, 14  
 Boston College, A Brief History, 6  
 Boston College, A Chronology, 7-9  
 Boston College Profile, 11  
 Boston College Properties, 62  
 Building Use, Summary, 62  
 Buildings and Grounds, See Physical Plant  
 Buildings, Boston College, 60-61  
 Burns Library, 76
- Campus Maps, 109-110  
 Chairmen, Board of Trustees, 16  
 Chairpersons, Department, 22  
 Charts of Administration, 18-20  
 Classrooms, 63  
 Compensation, Faculty, 27  
 Computer Network Elements, 79  
 Computer Statistics, 75, 78-79  
 Contracts and Grants, See Research & Sponsored Projects  
 Cross Application Competitor Schools, 32
- Deans, Academic, See Academic Administration  
 Degrees Conferred at Boston College, Types, 103  
 Degrees Conferred, 41-45  
 Department Chairpersons, 22  
 Development Statistics, 55-57  
 Digital Library Services, 75  
 Dining Facilities, 63
- Donors by Giving Club, 55  
 Dormitories, See Residence Halls
- Enrollment, Advancing Studies, 33-35  
 Enrollment, Full-Time Equivalent, 35  
 Enrollment, Full-Time Freshman by Year and Gender, 30  
 Enrollment, Graduate, by Degree Program and Discipline, Full- and Part-Time, 34-36  
 Enrollment, Graduate, by School, Gender, and Full- and Part-Time, 34  
 Enrollment, International Students, 34, 39-40  
 Enrollment, Minority Students, See AHANA
- Enrollment, Summer Session, 36  
 Enrollment, Transfer Students, 32  
 Enrollment, Undergraduate by School, Gender, and Full- and Part-Time, 33-34  
 Enrollment, Undergraduate Majors by School, 38  
 Evening College, see Advancing Studies  
 Executive Vice President Units, 20
- Facilities, See Physical Plant  
 Facility Capacities, 63  
 Faculty, Administration and, 14-27  
 Faculty, Compensation by Rank, 27  
 Faculty, by Highest Earned Degree and Gender, 25  
 Faculty, by Highest Earned Degree and Rank, 25  
 Faculty, by Rank and Gender, 25  
 Faculty, by School and Gender, 24  
 Faculty, by School and Rank, 24  
 Faculty, by School and Tenure Status, 24  
 Faculty, Full-Time Equivalent by School, 26  
 Faculty, Full-Time, Teaching Fellows, Teaching Assistants by School and Department, 26  
 Finance, 68-71  
 Financial Aid, Undergraduate and Graduate, 46  
 Financial Operations, Highlights, 68  
 Financial Position Statement, Condensed, 69  
 Foreign Student and Scholar Statistics, 34, 39-40  
 Foreword, 2  
 Founder of Boston College, 100  
 Freshman Admission Profile, 30  
 Freshman Applications, Acceptances, and Enrollment, 30  
 Freshman, Full-Time, Enrollment by Year and Gender, 30  
 Freshman, Geographic Distribution, 31  
 Full-Time Equivalent Enrollment, 35  
 Fund Raising, See Alumni & Development
- General Information, 100-110  
 Geographic Distribution, Alumni, 51  
 Geographic Distribution, Alumni by Region, 51  
 Geographic Distribution, Freshman, 31  
 Geographic Distribution, Undergraduates, 37  
 Geographic Distribution, Undergraduate and Graduate International Students, 40

## Fact Book Index (Continued)

- Gifts to the University, 55
- Graduate Degrees Conferred, 41, 45, 103
- Graduate Enrollment by Degree Program and Discipline, 34-36
- Graduate Enrollment by Gender, 33-34
- Graduate Enrollment by School, 35
- Graduate Enrollment, Full- and Part-Time, 35-36
- Graduation and Retention Rates, 47
- Grant Statistics, See Research and Sponsored Projects
  
- History, Boston College, 6-9
- Honorary Degrees Awarded, 100-103
- Honorary Degrees, Types Granted, 103
  
- Information Technology Services, 75, 78-79
- Intercollegiate Athletic Season Highlights, 94-97
- Intercollegiate Sports Participation, 97
- International Student and Scholar Statistics, 34, 39-40
- Intramural Sports Participation, 97
  
- Jesuit Community at Boston College, 16
  
- Language Laboratory, 77
- Libraries, 74
- Library Expenditures, 74
- Library Holdings, 74
- Library Services, 75
- Library Special Collections, 76
  
- Majors, Undergraduate by School, 38
- Maps, Campus, 109-110
- McMullen Museum of Art, 78
- Minority Student Enrollment, See AHANA
- Mission Statement, 2
  
- Network Elements, 79
  
- Officers of the University, 17
- Offices, 64
- Organization Chart, Administration, 18
- Organization Chart, Academic Vice President, 19
- Organization Chart, Executive Vice President, 20
  
- Personnel, Professional, Administrative, and Support Staff, 23
- Personnel, Restricted Funded, 23
- Photography Credits, 106
- Physical Plant, 60-65
- Presidents of Boston College, 100
- Professional, Administrative, and Support Staff Personnel, 23
- Profile, Boston College, 11
- Properties, Boston College, 62
  
- Research and Sponsored Projects, 82-91
- Research Institutes and Centers, 89-91
  
- Residence Hall Capacities, 64
  
- Restricted Funded Personnel, 23
  
- SAT, Average by Class, Freshman Enrollees, 30
- Sources of *Fact Book* Information, 106
- Special Collections, 76
- Sponsored Activities, Highlights, 85
- Sponsored Project Awards Received, 87
- Sponsored Project Awards Summary, 82
- Sponsored Projects by Department, 83
- Sponsored Projects, Dollar Amount Awards, 84
- Sponsored Projects, Proposals Submitted, 86
- Sponsored Projects, Selected Awards, 88
- Sponsored Projects, Source and Application, 82
- Sponsored Projects Statistics, 82-88
- Sports Participation, Intercollegiate Statistics, 97
- Sports Records, Varsity, 97
- Student Credit Hours by School, 33
- Student Learning and Support Center, 78
- Students, 30-47
- Students Studying Abroad, 47
- Summer Session Enrollment, 36
  
- Table of Contents, 3-5
- Teaching Fellows, Teaching Assistants, and Full-Time Faculty, 26
- Technology, 75, 78-79
- Telephone Infrastructure, 78
- Transfer Students, Applications, Acceptances, and Enrollment, 32
- Transfer Students, Enrollment by Previous Institution and Gender, 32
- Trustee Associate Membership, 15
- Trustee Membership, Board of, 14
- Tuition and Fees, 70-71
  
- Undergraduate and Graduate Financial Aid, 46
- Undergraduate Degrees Conferred, 41-44, 103
- Undergraduate Enrollment by Gender, 33-34
- Undergraduate Enrollment by School, 33-34
- Undergraduate Enrollment, Full- and Part-Time, 33-34
- Undergraduate Geographic Distribution, 37
- Undergraduate Graduation and Retention Rates, 47
- Undergraduate Majors, 38
- University Administrators, 21
- University Archives, 77
  
- Varsity Sports Records, 97
  
- Web Server, Successful Page Deliveries, 97